

# Grain Monitoring Program

## Weekly Performance Update

May 12, 2026

For Grain Week 39 2025-26 CY

April 27, 2026 to May 03, 2026

### Summary

	Week 39	Week 38	Var. from Last Year	
<b>1. Stocks in Store ('000 tonnes)</b>				
Country Elevators	↓ 3,873.0	3,909.2	10%	
% of Working Capacity	73%	73%		
Terminal Elevators	↑ 1,469.9	1,372.3	5%	
% of Working Capacity	76%	71%		
<b>2. Country Deliveries ('000 tonnes)</b>				
Country Deliveries	↑ 1,258.0	1,027.7	50%	
<b>3. Port Performance (Cars)</b>				
Vancouver Unloads	↓ 7,475	7,560	9%	
Prince Rupert Unloads	↓ 1,156	1,671	-22%	
Churchill Unloads	— 0	0	n/a	
Thunder Bay Unloads	↓ 1,853	1,951	-20%	
Total Weekly Unloads	↓ 10,484	11,182	-2%	
4-Week Rolling Average	↑ 11,094	10,591	4%	
Var. to 4-Week Rolling Average	-5%	6%		
YTD Unloads	364,675	354,191	5%	
Weekly Out-of-Car Time	↑ 16.1%	13.0%	49.5%	
<b>4. Terminal Shipments Year-to-Date ('000 tonnes)</b>				
Vancouver	↑ 25,438.0	24,702.4	9%	
Prince Rupert	↑ 4,069.0	3,978.4	4%	
Churchill	— 0.0	0.0	n/a	
Thunder Bay	↑ 5,079.2	4,859.3	0%	
Total Western Canada	↑ 34,586.2	33,540.1	7%	
<b>5. Vessels as at May 10, 2026</b>				
	<b>Week 40</b>	<b>Week 39</b>	<b>Var. from Last Year</b>	
Vancouver	Vessel Lineup in port	↓ 19	20	-24%
	Vessels Cleared	↓ 13	15	30%
	Vessels Arrived	— 12	12	20%
Pr. Rupert	Vessel Lineup in port	— 2	2	-50%
	Vessels Cleared	↑ 2	1	0%
	Vessels Arrived	— 2	2	0%
<b>Vessels Inbound May 11, 2026 to May 17, 2026 (Week 41)</b>				
Vancouver	13			
Prince Rupert	2			

#### 1. Stocks in Store: (Page 2)

- Country stocks decreased to 3.87 MMT in Week 39 utilizing 73% of the system's working capacity.
- Total western port terminal stocks increased to 1.47 MMT in Week 39, utilizing 76% of the working capacity.

#### 2. Country Deliveries: (Page 3)

- Deliveries to primary elevators were 1.26 MMT in Week 39.

#### 3. Port Performance: (Pages 3-5)

- Total western port unloads were 5% lower than the 4-week moving average and 2% lower than Week 39 last year.
- West Coast unloads were 8,631 cars (Vancouver 7,475 and Prince Rupert 1,156), 5% lower than the 4-week moving average and 3% higher than Week 39 last year.
- Thunder Bay had 1,853 unloads, 8% lower than the 4-week moving average and 20% lower than Week 39 last year.
- The total average terminal out-of-car time (OCT) increased to 16.1% from 13.0% the previous week. The OCT for Week 39 was 18.0% at Vancouver, 25.0% at Prince Rupert, and 7.6% at Thunder Bay.

#### 4. Shipments: (Page 5)

- Year-to-date Western Canadian shipments from port terminal elevators at Week 39 are 7% higher than the same period last year and 9% higher than the 3-year average.

#### 5. Vessels: (Page 5)

- Vancouver vessel lineup for Week 40 2025-26 decreased to 19 vessels (The current one-year average at Vancouver is 20 vessels). Of the 19, 8 were at berth, 10 were anchored at English Bay, and 1 was anchored at Vancouver Island.
- Prince Rupert vessel lineup for Week 40 2025-26 remained at 2 vessels (The current one-year average at Prince Rupert is 2 vessels).
- Vessels cleared from Vancouver was 13 and from Prince Rupert was 2 in Week 40 2025-26.

# 1. Stocks in Store

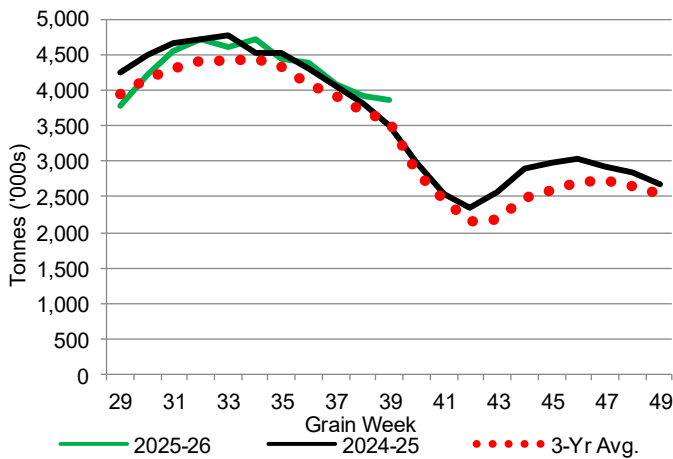
1-A1 Country Stocks ('000 tonnes) – Week 39

	MB	SK	AB	BC	Total
2025-26	893.1	1,736.9	1,228.3	14.7	3,873.0
2024-25	720.6	1,770.7	1,002.3	17.8	3,511.4
3-Yr Avg.	768.0	1,696.4	1,088.7	15.6	3,568.7
Var % - LY	24%	-2%	23%	-17%	10%
Var % 3-Yr Avg.	16%	2%	13%	-6%	9%
Storage Capacity	1,618.3	4,073.2	2,493.8	30.6	8,215.9
Estimated Working Capacity	1,051.9	2,647.6	1,621.0	19.9	5,340.4
25-26 % of Wkg Cap	85%	66%	76%	74%	73%

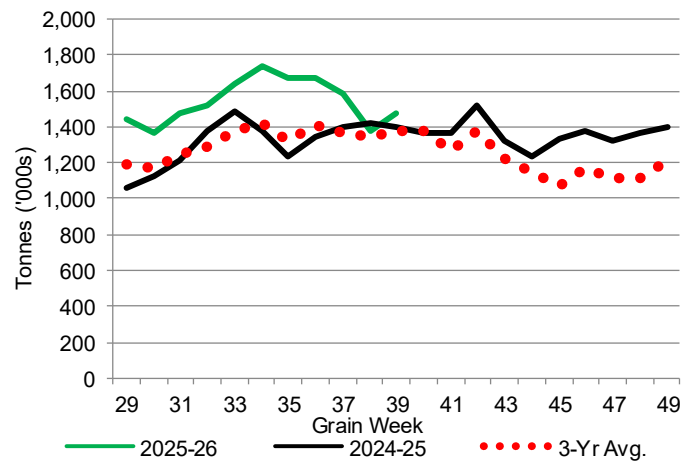
1-B1 Terminal Stocks ('000 tonnes) – Week 39

	VC	PR	West Coast	CH	TB	Total
2025-26	741.1	125.5	866.6	0.7	602.6	1,469.9
2024-25	733.4	95.1	828.5	0.7	568.4	1,397.6
3-Yr Avg.	721.3	106.2	827.5	0.7	545.5	1,373.7
Var % - LY	1%	32%	5%	0%	6%	5%
Var % 3-Yr Avg.	3%	18%	5%	0%	10%	7%
Storage Capacity	1,275.5	209.5	1,485.0	140.0	1,127.5	2,752.5
Estimated Working Capacity	892.9	146.7	1,039.6	98.0	789.2	1,926.8
25-26 % of Wkg Cap	83%	86%	83%	1%	76%	76%

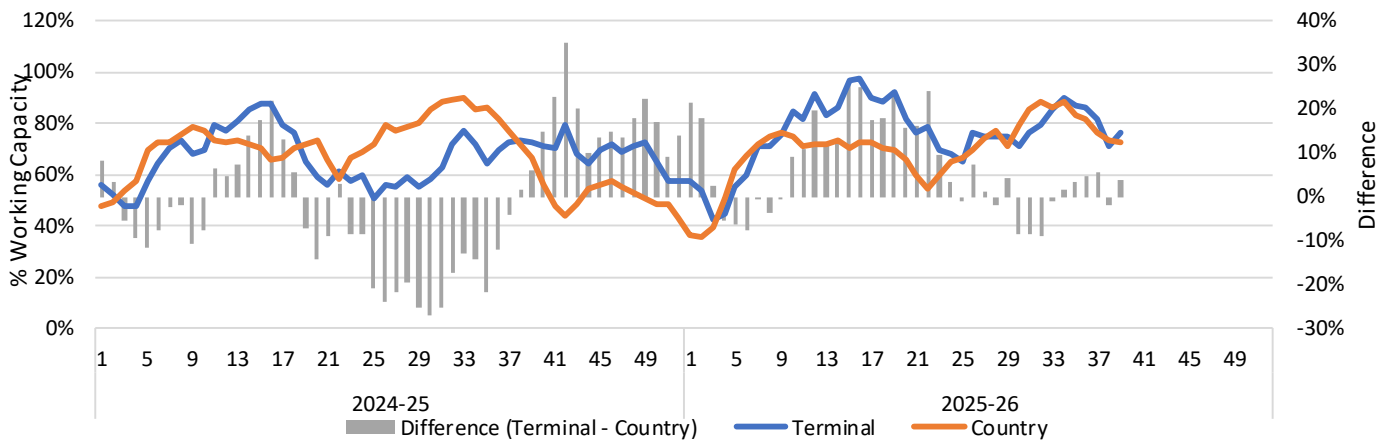
1-A2 Weekly Country Stocks in Store



1-B2 Weekly Terminal Stocks in Store



1-C Weekly Stock Balance

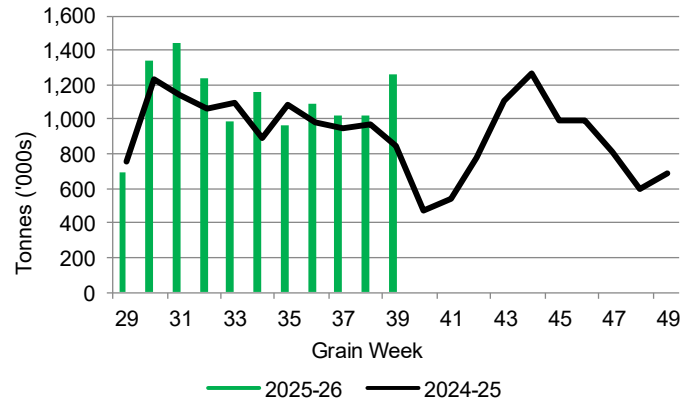


## 2. Country Deliveries

2-A Country Deliveries ('000 tonnes) – Week 39

	MB	SK	AB	BC	Total
2025-26	250.0	567.9	433.5	6.6	1,258.0
2024-25	166.8	461.1	208.5	5.0	841.4
4 Wk Avg	197.8	497.8	400.1	5.3	1,100.9
Var % to Last Year	50%	23%	108%	32%	50%
Var % To 4 Wk Avg	26%	14%	8%	25%	14%

2-B 2025-26 Weekly Country Deliveries



## 3. Port Performance

3-A Weekly Unloads by Port (Cars) – This Year for Week 39, 4-Week Moving Average and Variances

	Vancouver	Prince Rupert	West Coast	Thunder Bay	Churchill	Total
2025-26	7,475	1,156	8,631	1,853	-	10,484
2024-25	6,878	1,477	8,355	2,303	n/a	10,658
4-Wk Avg.	7,735	1,335	9,070	2,024	-	11,094
Var % to Last Year	9%	-22%	3%	-20%	n/a	-2%
Var % to 4-Wk Avg.	-3%	-13%	-5%	-8%	n/a	-5%

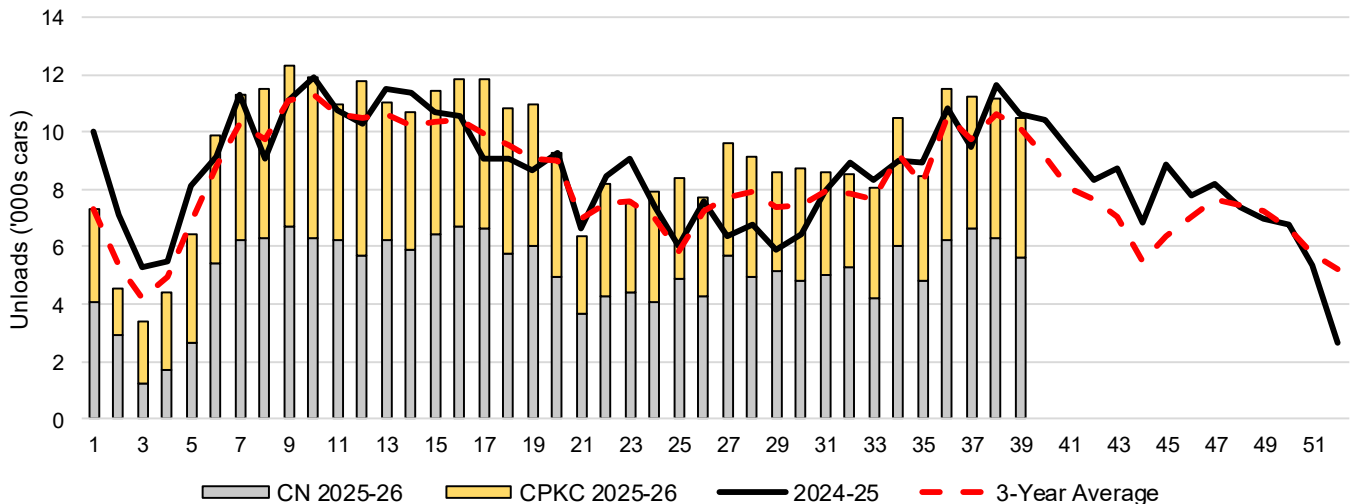
3-B Terminal Unloads by Port – This Year-to-Date as at Week 39 and Variances

YTD Unloads (cars)	Vancouver	Prince Rupert	West Coast	Thunder Bay	Churchill	Total
2025-26	260,742	42,316	303,058	61,617	-	364,675
2024-25	246,213	40,576	286,789	59,622	-	346,411
3-Yr Avg	240,462	36,221	276,683	58,275	-	334,958
Var % to Last Year	6%	4%	6%	3%	n/a	5%
Var % to 3-Yr Avg	8%	17%	10%	6%	n/a	9%

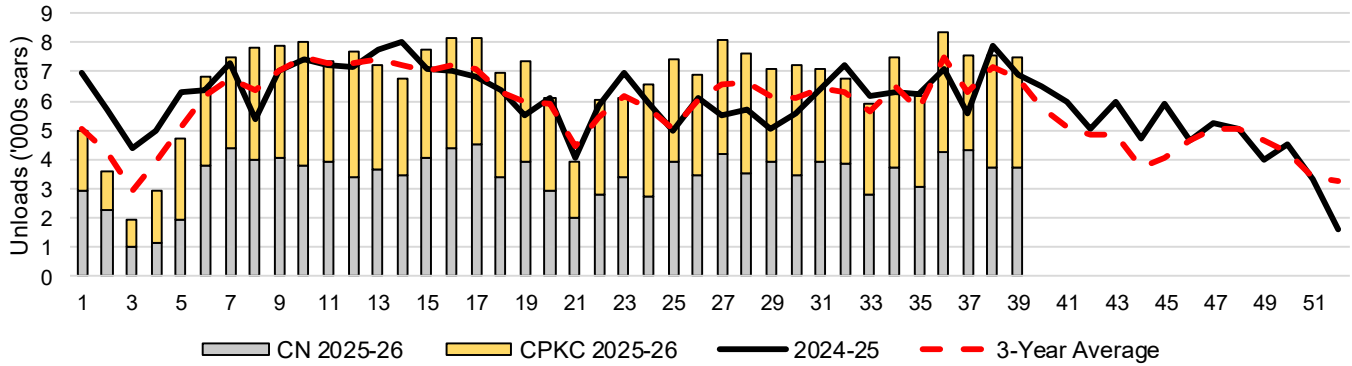
  

YTD Unloads ('000 tonnes)	Vancouver	Prince Rupert	West Coast	Thunder Bay	Churchill	Total
2025-26	25,113.4	4,105.8	29,219.2	5,974.5	-	35,193.7
2024-25	23,510.3	3,918.8	27,429.1	5,787.7	-	33,216.8
3-Yr Avg.	23,090.2	3,507.5	26,597.7	5,658.0	-	32,255.7
Var % to Last Year	7%	5%	7%	3%	n/a	6%
Var % to 3-Yr Avg.	9%	17%	10%	6%	n/a	9%

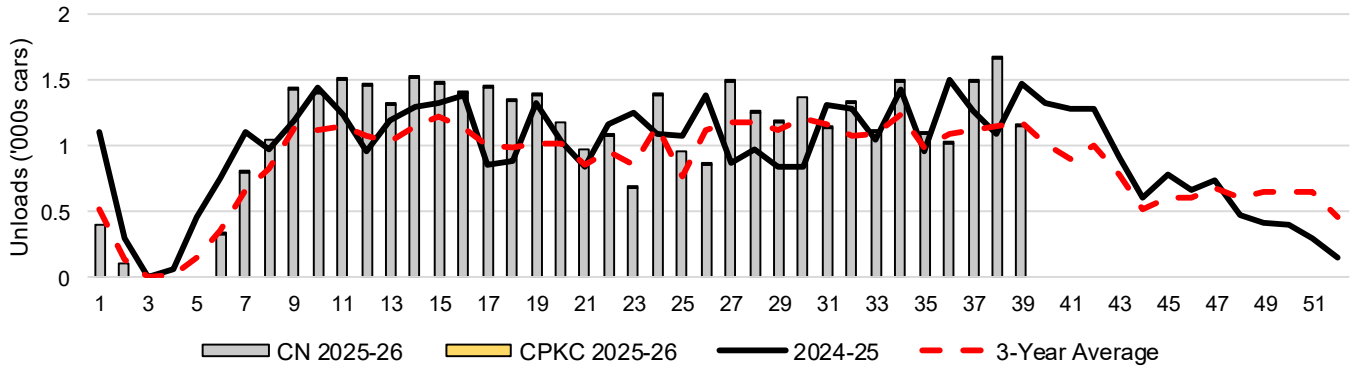
3-C Western Port Terminal Unloads (cars), Total by Carrier, This Year vs. Last Year and the 3-Year Average



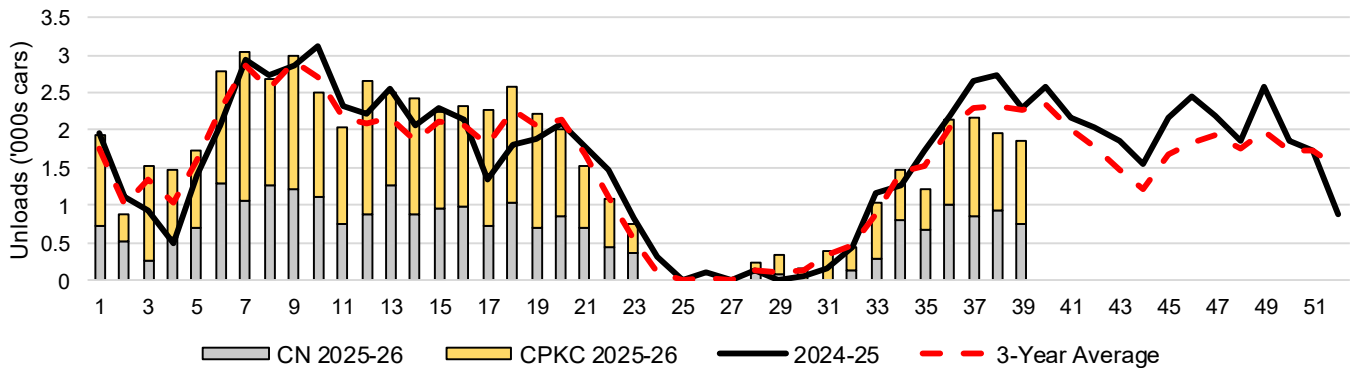
### 3-D Vancouver Terminal Unloads (cars), Total by Carrier, This Year vs. Last Year and the 3-Year Average



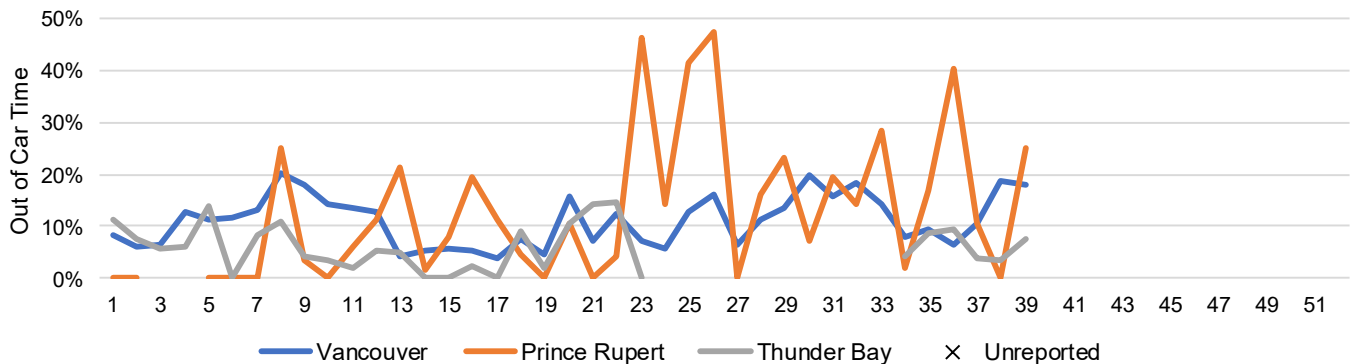
### 3-E Prince Rupert Terminal Unloads (cars), Total by Carrier, This Year vs. Last Year and the 3-Year Average



### 3-F Thunder Bay Terminal Unloads (cars), Total by Carrier, This Year vs. Last Year and the 3-Year Average



### 3-G Weekly Out-of-Car Time (% of hours out-of-cars / total hours working)



Out-of-car time is measured weekly and uses data from terminal elevators on the total number of hours the facilities are open & staffed (including overtime hours) and the corresponding number of hours that terminals have no railcars available to unload. The measure is expressed as a percentage (hours without cars to the total number of hours working).

### 3-H Monthly Unloads (cars) – This Year vs. Last Year and the 3-Year Average to Week 39 2025-26

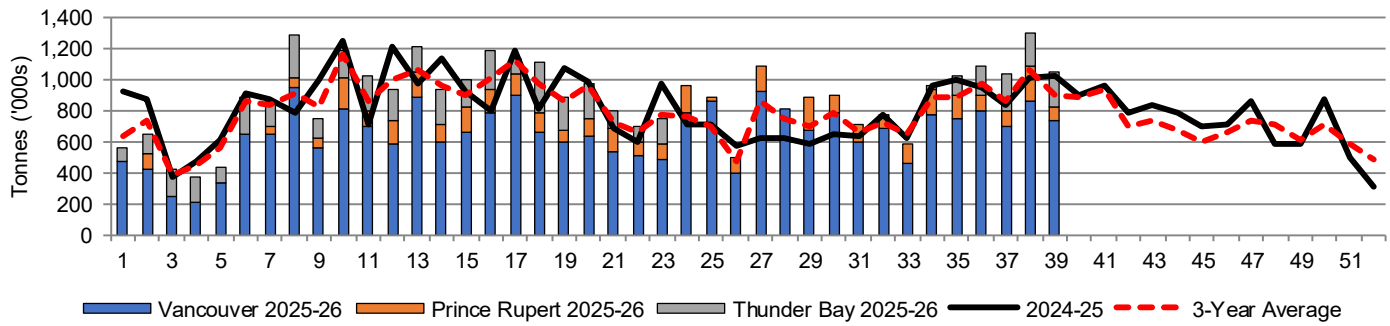
Months	Aug	Sep	Oct	Nov	Dec	Jan	Feb	Mar	Apr	May	Jun	Jul
Weeks	1-4	5-8	9-13	14-17	18-22	23-26	27-30	31-34	35-39	40-43	44-47	48-52
2025-26	19,698	39,195	57,998	45,883	45,719	31,587	36,098	35,650	52,847	-	-	-
2024-25	27,951	37,723	55,616	41,691	42,065	30,063	25,510	34,219	51,573	36,877	31,705	29,163
3-Yr Avg.	21,886	35,667	54,166	41,012	42,119	27,631	30,543	32,597	49,336	31,924	26,591	32,929
Var % to Last Year	-30%	4%	4%	10%	9%	5%	42%	4%	2%			
Var % to 3-Yr Avg.	-10%	10%	7%	12%	9%	14%	18%	9%	7%			

## 4. Shipments

### 4-A Shipments from Port Terminals ('000 tonnes) – This Year-to-Date as at Week 39 and Variance to Last Year-to-Date

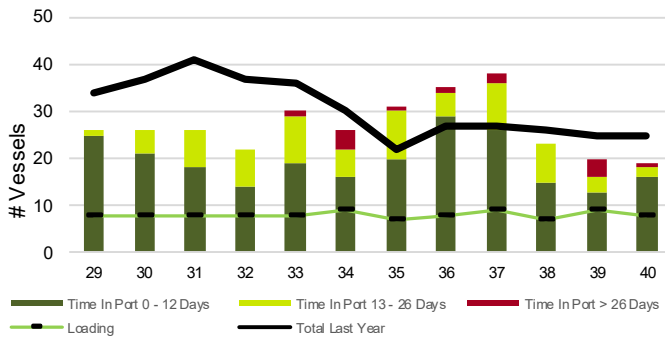
	Vancouver	Prince Rupert	West Coast	Thunder Bay	Churchill	Total	
2025-26	25,438.0	4,069.0	29,507.0	5,079.2	-	34,586.2	
2024-25	23,328.6	3,933.3	27,261.9	5,089.9	-	32,351.8	
3-Yr Avg.	23,363.0	3,480.9	26,843.8	4,952.3	-	31,796.1	
Var % to Last Year		9%	3%	8%	0%	n/a	7%
Var % to 3-Yr Avg.		9%	17%	10%	3%	n/a	9%

### 4-B Weekly Shipments ('000 tonnes) from Port Terminals – This Year vs Last Year and the 3-Year Average

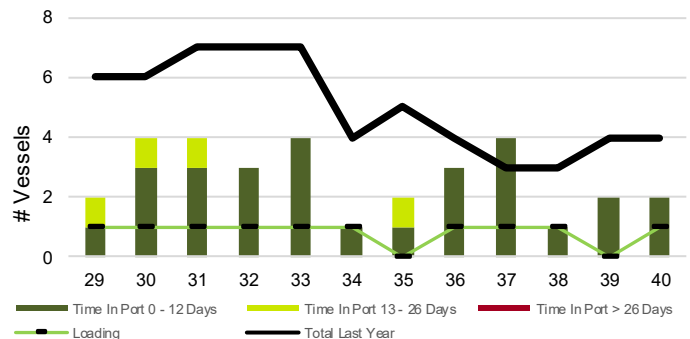


## 5. Vessels

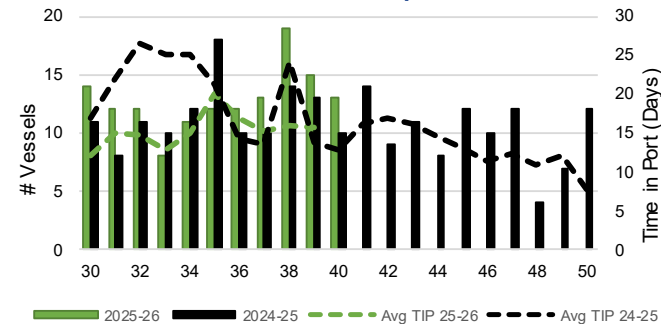
### 5-A Vessel Lineup at Vancouver as of Week 40 2025-26



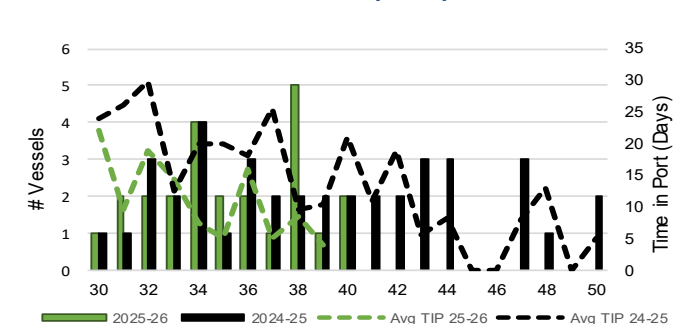
### 5-C Vessel Lineup at Prince Rupert as of Week 40 2025-26



### 5-B Vessels Cleared at Vancouver up to Week 40 2025-26



### 5-D Vessels Cleared at Prince Rupert up to Week 40 2025-26



Note: The 'Time in Port' measure for 5-A and 5-C is calculated as how long each vessel in the lineup has been in port as at Sunday 23:59 of that grain week. The 'Avg Time in Port (TIP)' measure for 5-B and 5-D is the average number of days that all vessels which cleared that week were in port. These measures use vessel data provided by the BC Chamber of Shipping and Pacific Pilotage Authority.