

# Grain Monitoring Program

## Weekly Performance Update

April 07, 2026

For Grain Week 34 2025-26 CY  
March 23, 2026 to March 29, 2026

### Summary

	Week 34	Week 33	Var. from Last Year	
<b>1. Stocks in Store ('000 tonnes)</b>				
Country Elevators	↑ 4,708.9	4,612.7	4%	
% of Working Capacity	88%	86%		
Terminal Elevators	↑ 1,732.4	1,644.4	26%	
% of Working Capacity	90%	85%		
<b>2. Country Deliveries ('000 tonnes)</b>				
Country Deliveries	↑ 1,164.2	992.9	31%	
<b>3. Port Performance (Cars)</b>				
Vancouver Unloads	↑ 7,509	5,884	19%	
Prince Rupert Unloads	↑ 1,486	1,104	4%	
Churchill Unloads	— 0	0	n/a	
Thunder Bay Unloads	↑ 1,373	1,047	8%	
Total Weekly Unloads	↑ 10,368	8,035	15%	
4-Week Rolling Average	↑ 8,887	8,478	4%	
Var. to 4-Week Rolling Average	17%	-5%		
YTD Unloads	311,724	301,356	6%	
Weekly Out-of-Car Time	↓ 6.7%	16.1%	-61.5%	
<b>4. Terminal Shipments Year-to-Date ('000 tonnes)</b>				
Vancouver	↑ 21,585.7	20,816.1	8%	
Prince Rupert	↑ 3,413.7	3,245.3	2%	
Churchill	— 0.0	0.0	n/a	
Thunder Bay	↑ 4,098.4	4,082.2	-1%	
Total Western Canada	↑ 29,097.8	28,143.6	6%	
<b>5. Vessels as at Apr 5, 2026</b>				
	Week 35	Week 34	Var. from Last Year	
Vancouver	Vessel Lineup in port	↑ 30	26	36%
	Vessels Cleared	↑ 12	11	-33%
	Vessels Arrived	↑ 16	7	60%
Pr. Rupert	Vessel Lineup in port	↑ 2	1	-60%
	Vessels Cleared	↓ 2	4	100%
	Vessels Arrived	↑ 3	1	50%
<b>Vessels Inbound Apr 06, 2026 to Apr 12, 2026 (Week 36)</b>				
Vancouver	17			
Prince Rupert	3			
<b>6. Weather</b>				
	Week 34 Actual	Week 35 Actual	Week 36 Forecast	
Winnipeg Days < -25°C	0	0	0	
Edmonton Days < -25°C	0	0	0	
Vancouver Days Precip > 8mm	0	1	2	

#### 1. Stocks in Store: (Page 2)

- Country stocks increased to 4.71 MMT in Week 34 utilizing 88% of the system's working capacity. Space in Alberta is limited.
- Total western port terminal stocks increased to 1.73 MMT in Week 34, utilizing 90% of the working capacity. Space on the West Coast is limited.

#### 2. Country Deliveries: (Page 3)

- Deliveries to primary elevators were 1.16 MMT in Week 34.

#### 3. Port Performance: (Pages 3-5)

- Total western port unloads were 17% higher than the 4-week moving average and 15% higher than Week 34 last year.
- West Coast unloads were 8,995 cars (Vancouver 7,509 and Prince Rupert 1,486), 11% higher than the 4-week moving average and 16% higher than Week 34 last year.
- Thunder Bay had 1,373 unloads, 69% higher than the 4-week moving average and 8% higher than Week 34 last year.
- The total average terminal out-of-car time (OCT) decreased to 6.7% from 16.1% the previous week. The OCT for Week 34 was 9.1% at Vancouver, 1.8% at Prince Rupert, and 0.0% at Thunder Bay.

#### 4. Shipments: (Page 5)

- Year-to-date Western Canadian shipments from port terminal elevators at Week 34 are 6% higher than the same period last year and 7% higher than the 3-year average.

#### 5. Vessels: (Page 5)

- Vancouver vessel lineup for Week 35 2025-26 increased to 30 vessels (The current one-year average at Vancouver is 20 vessels). Of the 30, 7 were at berth, 10 were anchored at English Bay, 1 was anchored at Burrard Inlet, and 12 were anchored at Vancouver Island.
- Prince Rupert vessel lineup for Week 35 2025-26 increased to 2 vessels (The current one-year average at Prince Rupert is 3 vessels).
- Vessels cleared from Vancouver was 12 and from Prince Rupert was 2 in Week 35 2025-26.

#### 6. Weather: (Page 6)

- Temperatures across the prairies are forecasted to remain above -25C. Railways are not expected to invoke their winter operating plans.

# 1. Stocks in Store

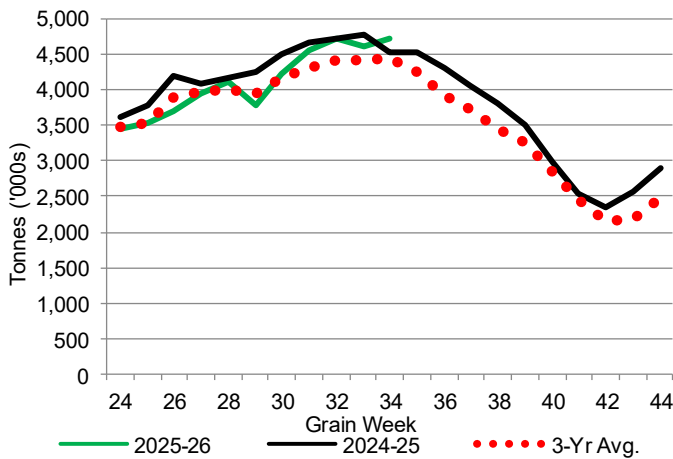
1-A1 Country Stocks ('000 tonnes) – Week 34

	MB	SK	AB	BC	Total
2025-26	946.2	2,257.4	1,489.8	15.5	4,708.9
2024-25	854.3	2,310.5	1,340.6	14.3	4,519.7
3-Yr Avg.	863.3	2,242.0	1,305.7	17.5	4,428.6
Var % - LY	11%	-2%	11%	8%	4%
Var % 3-Yr Avg.	10%	1%	14%	-11%	6%
Storage Capacity	1,631.3	4,053.8	2,492.3	30.6	8,208.0
Estimated Working Capacity	1,060.3	2,635.0	1,620.0	19.9	5,335.2
25-26 % of Wkg Cap	89%	86%	92%	78%	88%

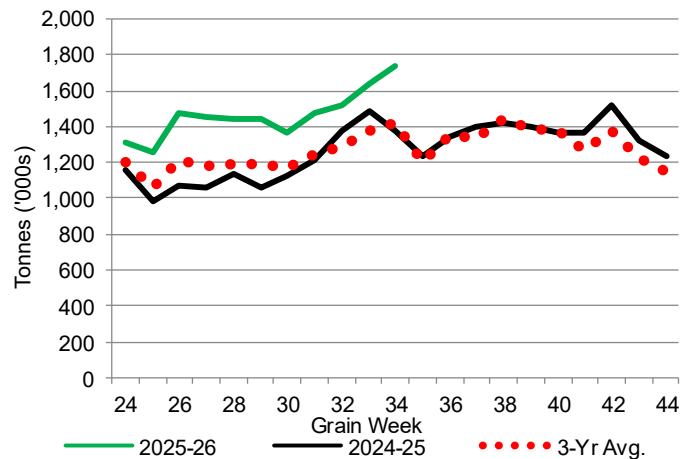
1-B1 Terminal Stocks ('000 tonnes) – Week 34

	VC	PR	West Coast	CH	TB	Total
2025-26	913.3	152.0	1,065.3	0.7	666.4	1,732.4
2024-25	807	109.2	916.2	0.7	460.5	1,377.4
3-Yr Avg.	776.4	111.0	887.4	0.7	537.7	1,425.8
Var % - LY	13%	39%	16%	0%	45%	26%
Var % 3-Yr Avg.	18%	37%	20%	0%	24%	22%
Storage Capacity	1,275.5	209.5	1,485.0	140.0	1,127.5	2,752.5
Estimated Working Capacity	892.9	146.7	1,039.6	98.0	789.2	1,926.8
25-26 % of Wkg Cap	102%	104%	102%	1%	84%	90%

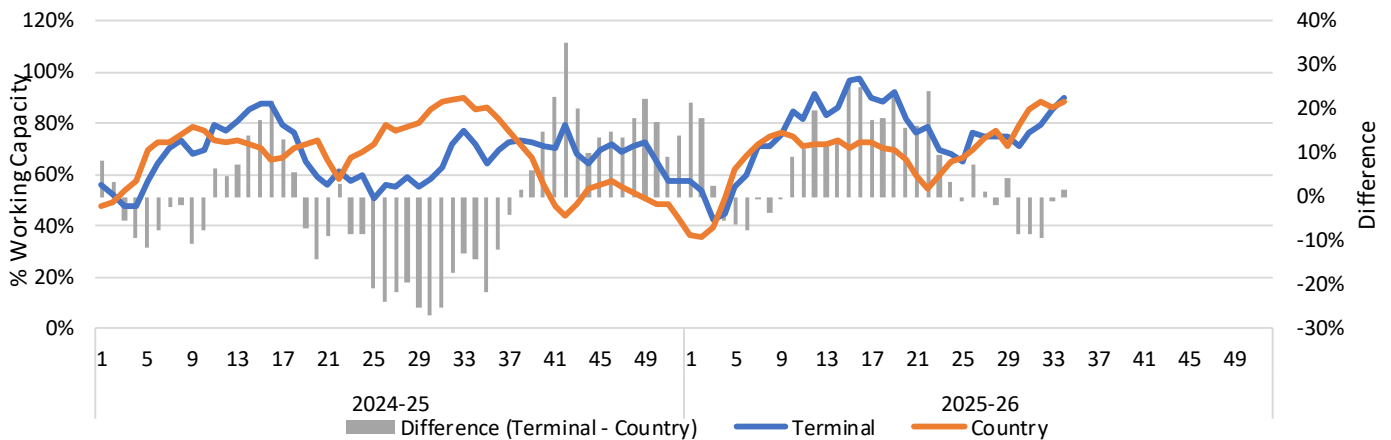
1-A2 Weekly Country Stocks in Store



1-B2 Weekly Terminal Stocks in Store



1-C Weekly Stock Balance

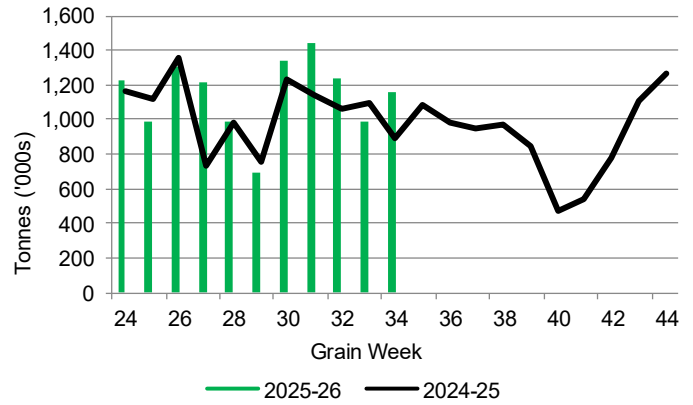


## 2. Country Deliveries

2-A Country Deliveries ('000 tonnes) – Week 34

	MB	SK	AB	BC	Total
2025-26	178.1	600.8	378.9	6.4	1,164.2
2024-25	151.4	468.5	263.4	3.9	887.2
4 Wk Avg	161.5	625.6	414.9	6.6	1,208.6
Var % to Last Year	18%	28%	44%	64%	31%
Var % To 4 Wk Avg	10%	-4%	-9%	-3%	-4%

2-B 2025-26 Weekly Country Deliveries



## 3. Port Performance

3-A Weekly Unloads by Port (Cars) – This Year for Week 34, 4-Week Moving Average and Variances

	Vancouver	Prince Rupert	West Coast	Thunder Bay	Churchill	Total
2025-26	7,509	1,486	8,995	1,373	-	10,368
2024-25	6,321	1,433	7,754	1,271	n/a	9,025
4-Wk Avg.	6,808	1,266	8,074	813	-	8,887
Var % to Last Year	19%	4%	16%	8%	n/a	15%
Var % to 4-Wk Avg.	10%	17%	11%	69%	n/a	17%

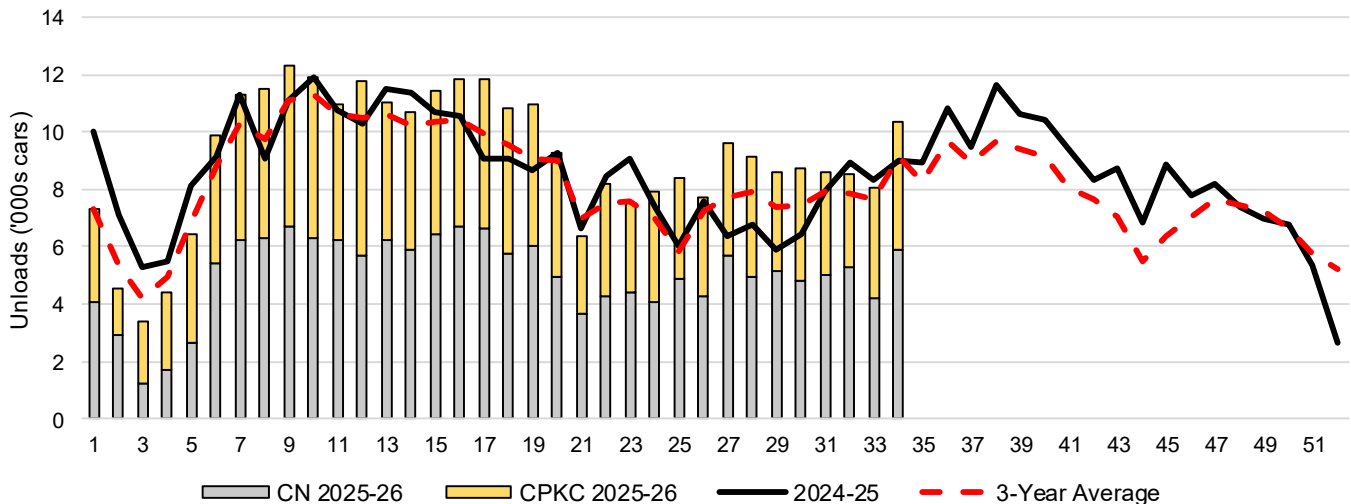
3-B Terminal Unloads by Port – This Year-to-Date as at Week 34 and Variances

YTD Unloads (cars)	Vancouver	Prince Rupert	West Coast	Thunder Bay	Churchill	Total
2025-26	223,649	35,877	259,526	52,198	-	311,724
2024-25	212,539	34,292	246,831	48,007	-	294,838
3-Yr Avg	207,131	30,686	237,818	47,770	-	285,587
Var % to Last Year	5%	5%	5%	9%	n/a	6%
Var % to 3-Yr Avg	8%	17%	9%	9%	n/a	9%

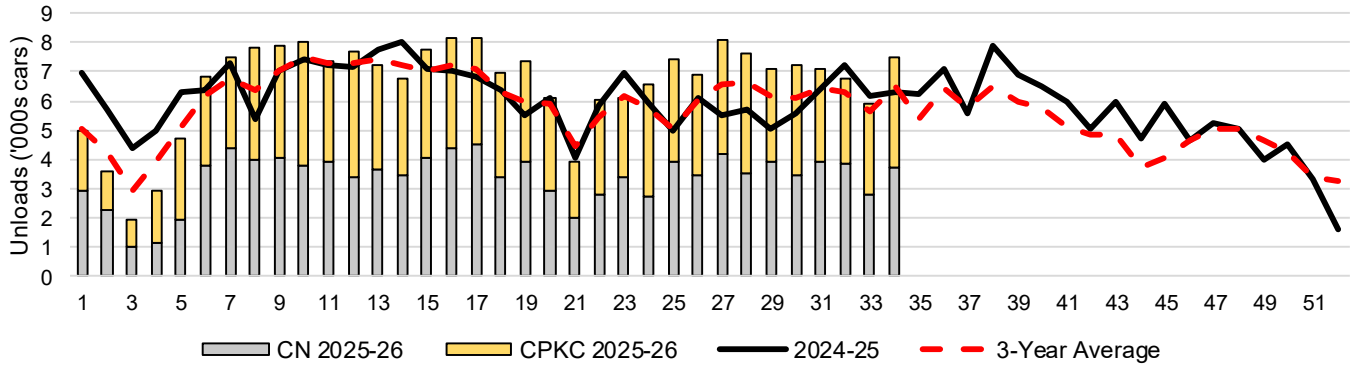
  

YTD Unloads ('000 tonnes)	Vancouver	Prince Rupert	West Coast	Thunder Bay	Churchill	Total
2025-26	21,566.5	3,478.6	25,045.1	5,066.3	-	30,111.4
2024-25	20,283.1	3,308.1	23,591.2	4,658.8	-	28,250.0
3-Yr Avg.	19,894.8	2,970.9	22,865.7	4,637.8	-	27,503.5
Var % to Last Year	6%	5%	6%	9%	n/a	7%
Var % to 3-Yr Avg.	8%	17%	10%	9%	n/a	9%

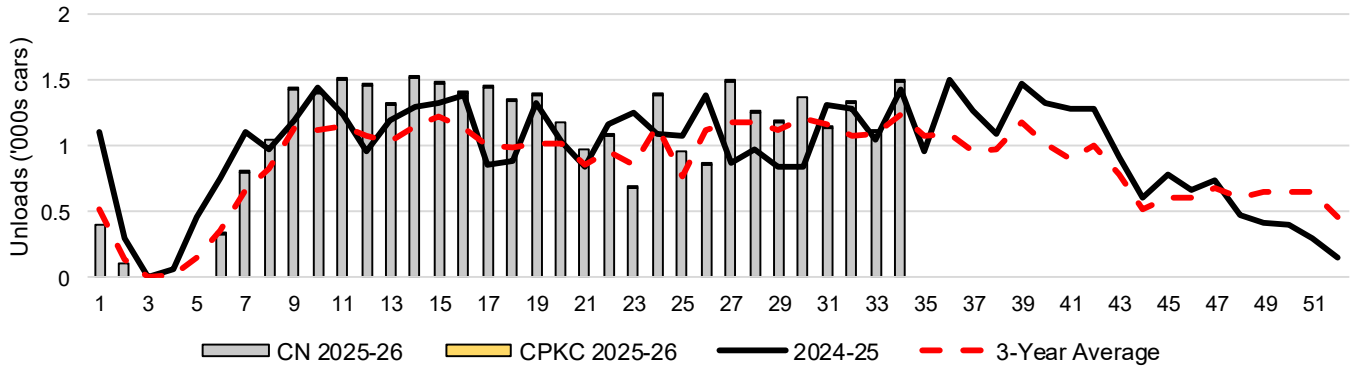
3-C Western Port Terminal Unloads (cars), Total by Carrier, This Year vs. Last Year and the 3-Year Average



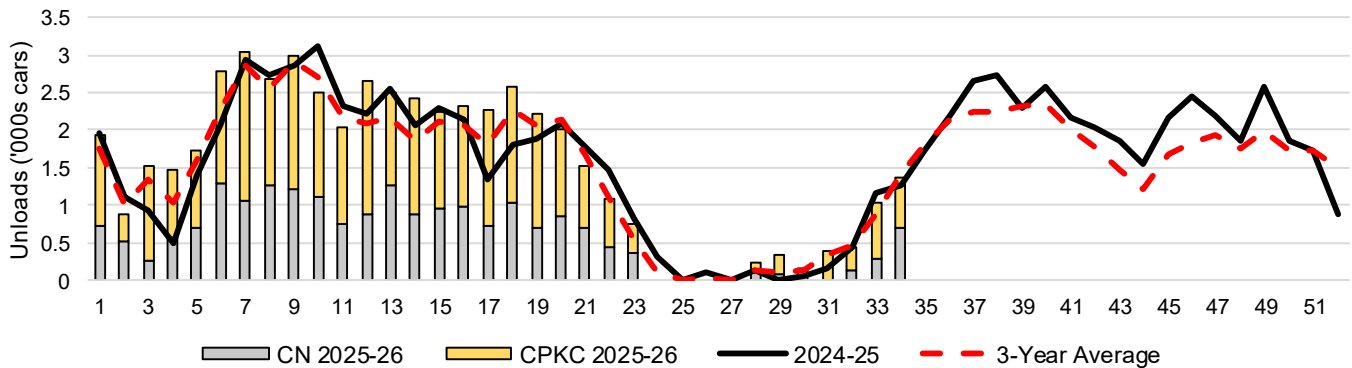
### 3-D Vancouver Terminal Unloads (cars), Total by Carrier, This Year vs. Last Year and the 3-Year Average



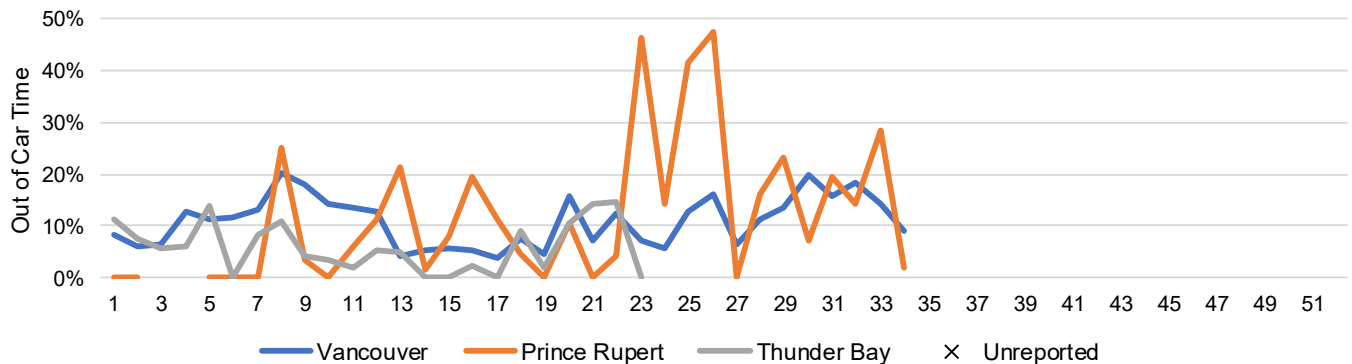
### 3-E Prince Rupert Terminal Unloads (cars), Total by Carrier, This Year vs. Last Year and the 3-Year Average



### 3-F Thunder Bay Terminal Unloads (cars), Total by Carrier, This Year vs. Last Year and the 3-Year Average



### 3-G Weekly Out-of-Car Time (% of hours out-of-cars / total hours working)



Out-of-car time is measured weekly and uses data from terminal elevators on the total number of hours the facilities are open & staffed (including overtime hours) and the corresponding number of hours that terminals have no railcars available to unload. The measure is expressed as a percentage (hours without cars to the total number of hours working).

### 3-H Monthly Unloads (cars) – This Year vs. Last Year and the 3-Year Average to Week 34 2025-26

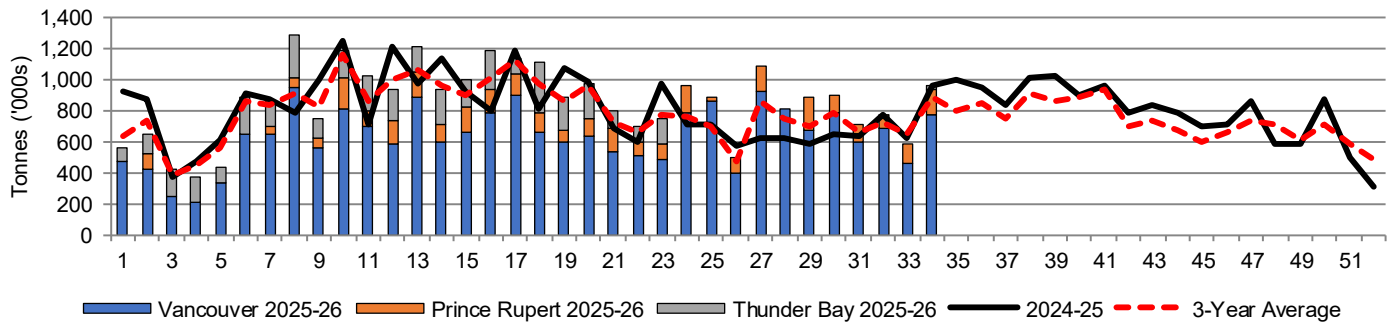
Months	Aug	Sep	Oct	Nov	Dec	Jan	Feb	Mar	Apr	May	Jun	Jul
Weeks	1-4	5-8	9-13	14-17	18-22	23-26	27-30	31-34	35-39	40-43	44-47	48-52
2025-26	19,698	39,195	57,998	45,883	45,719	31,587	36,097	35,547	-	-	-	-
2024-25	27,951	37,723	55,616	41,691	42,065	30,063	25,510	34,219	51,573	36,877	31,705	29,163
3-Yr Avg.	21,886	35,667	54,166	41,012	42,119	27,631	30,543	32,562	46,068	31,924	26,591	32,929
Var % to Last Year	-30%	4%	4%	10%	9%	5%	42%	4%				
Var % to 3-Yr Avg.	-10%	10%	7%	12%	9%	14%	18%	9%				

## 4. Shipments

### 4-A Shipments from Port Terminals ('000 tonnes) – This Year-to-Date as at Week 34 and Variance to Last Year-to-Date

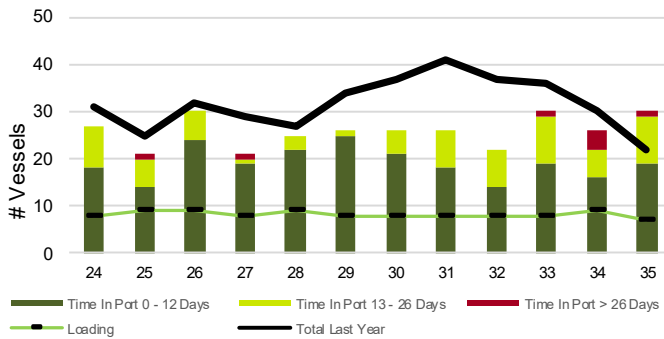
	Vancouver	Prince Rupert	West Coast	Thunder Bay	Churchill	Total	
2025-26	21,585.7	3,413.7	24,999.4	4,098.4	-	29,097.8	
2024-25	20,042.6	3,349.2	23,391.8	4,157.2	-	27,549.0	
3-Yr Avg.	20,150.8	2,973.0	23,123.8	4,000.7	-	27,124.5	
Var % to Last Year		8%	2%	7%	-1%	n/a	6%
Var % to 3-Yr Avg.		7%	15%	8%	2%	n/a	7%

### 4-B Weekly Shipments ('000 tonnes) from Port Terminals – This Year vs Last Year and the 3-Year Average

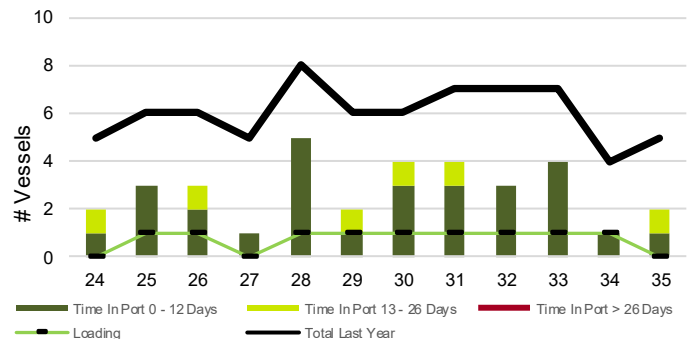


## 5. Vessels

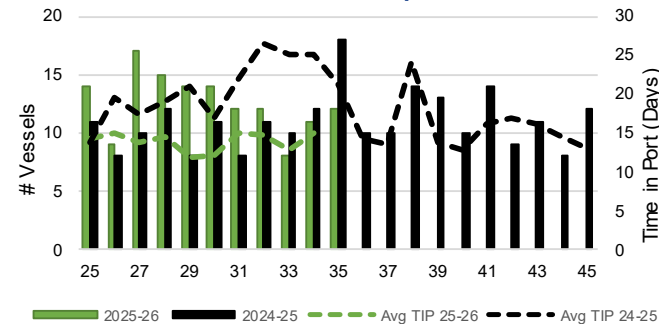
### 5-A Vessel Lineup at Vancouver as of Week 35 2025-26



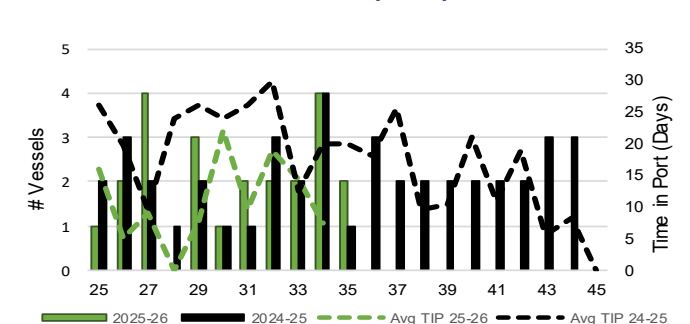
### 5-C Vessel Lineup at Prince Rupert as of Week 35 2025-26



### 5-B Vessels Cleared at Vancouver up to Week 35 2025-26



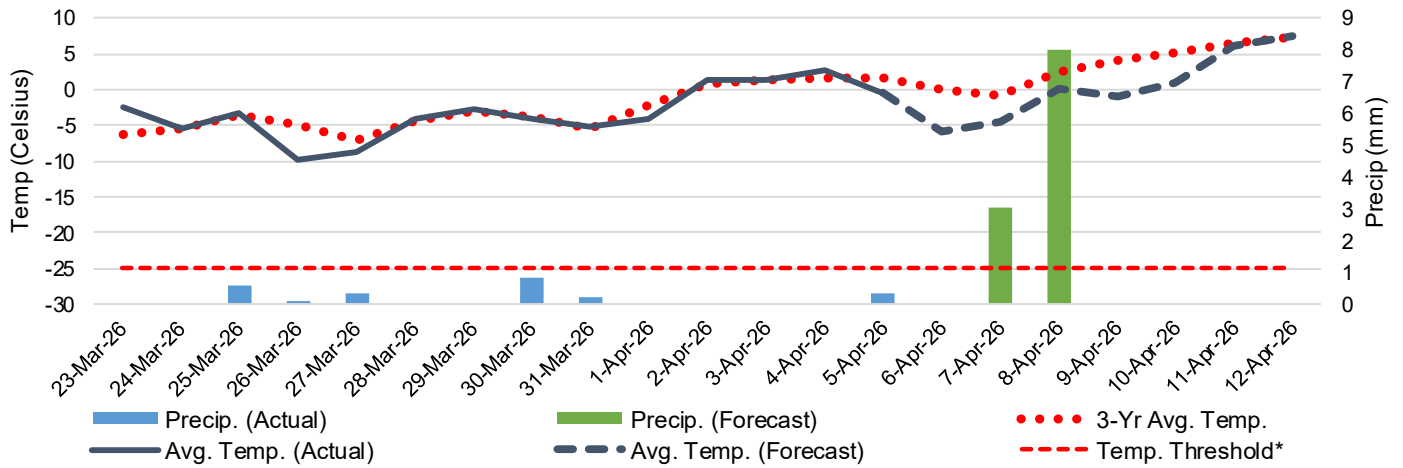
### 5-D Vessels Cleared at Prince Rupert up to Week 35 2025-26



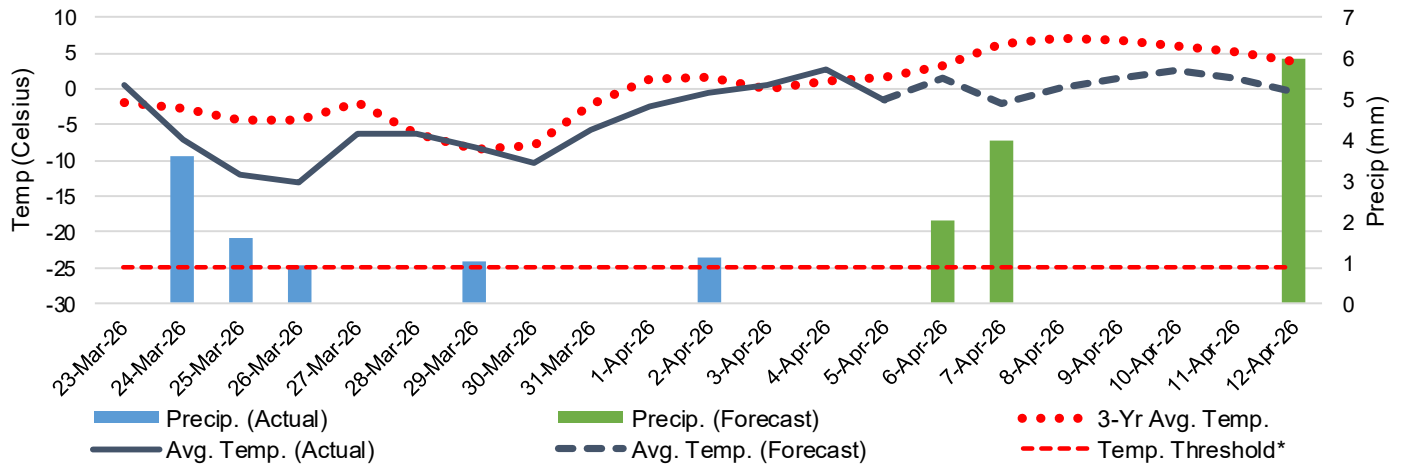
Note: The 'Time in Port' measure for 5-A and 5-C is calculated as how long each vessel in the lineup has been in port as at Sunday 23:59 of that grain week. The 'Avg Time in Port (TIP)' measure for 5-B and 5-D is the average number of days that all vessels which cleared that week were in port. These measures use vessel data provided by the BC Chamber of Shipping and Pacific Pilotage Authority.

# 6. Weather

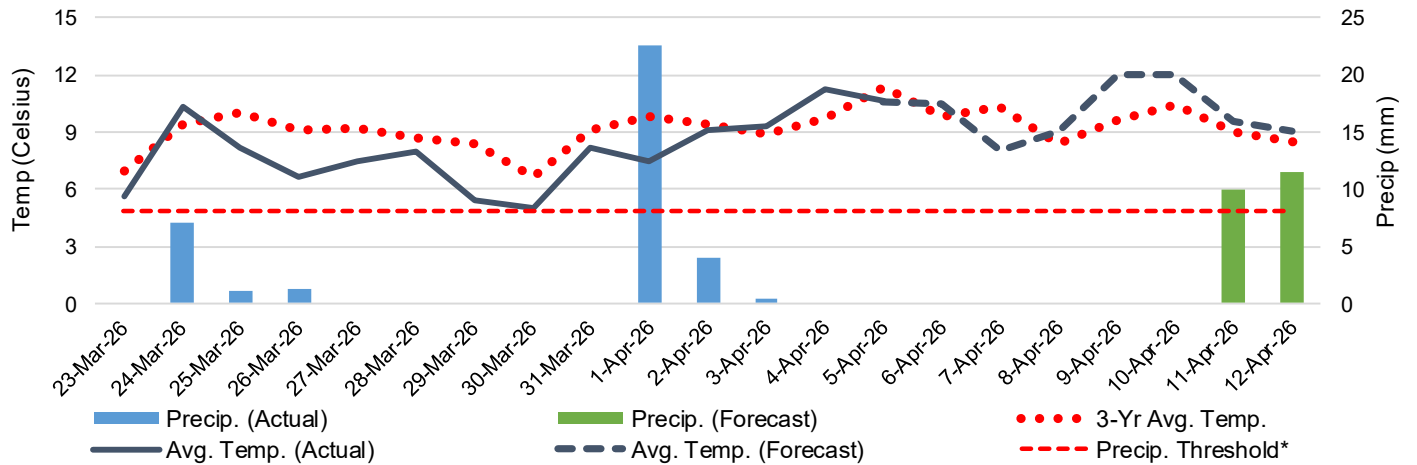
6-A Actual and Forecasted Weather at Winnipeg up to Week 36 2025-26



6-B Actual and Forecasted Weather at Edmonton up to Week 36 2025-26



6-C Actual and Forecasted Weather at Vancouver up to Week 36 2025-26



\*Note: Precip Threshold refers to 8mm of rain. At this level of precipitation, vessel loading may be delayed. The duration of the delay will be dependent on the ship, the duration of rainfall, and the amount of precipitation. 8mm is a general guideline and is not meant to be a definitive limit.  
Source: Environment and Climate Change Canada, The Weather Network (Forecast)