

Grain Monitoring Program

Weekly Performance Update

September 02, 2025

For Grain Week 03 2025-26 CY
August 18, 2025 to August 24, 2025

Summary

Summary		Week 03	Week 02	Var. from Last Year	
1. Stocks in Store ('000 tonnes)					
Country Elevators	↑	2,102.4	1,897.4	-27%	
% of Working Capacity		40%	36%		
Terminal Elevators	↓	812.2	1,035.3	-12%	
% of Working Capacity		42%	54%		
2. Country Deliveries ('000 tonnes)					
Country Deliveries	↑	699.7	401.8	-21%	
3. Port Performance (Cars)					
Vancouver Unloads	↓	1,942	3,599	-56%	
Prince Rupert Unloads	↓	0	110	n/a	
Churchill Unloads	—	0	0	n/a	
Thunder Bay Unloads	↑	1,299	877	38%	
Total Weekly Unloads	↓	3,241	4,586	-39%	
4-Week Rolling Average	↓	4,450	5,004	-28%	
Var. to 4-Week Rolling Average		-27%	-8%		
YTD Unloads		15,168	11,927	-33%	
Weekly Out-of-Car Time	↑	21.0%	4.5%	-5.4%	
4. Terminal Shipments Year-to-Date ('000 tonnes)					
Vancouver	↑	1,146.3	897.7	-19%	
Prince Rupert	—	106.3	106.3	-52%	
Churchill	—	0.0	0.0	n/a	
Thunder Bay	↑	371.2	200.8	-28%	
Total Western Canada	↑	1,623.8	1,204.8	-25%	
5. Vessels as at Aug 31, 2025		Week 04	Week 03	Var. from Last Year	
Vancouver	Vessel Lineup in port	↑	15	6	-32%
	Vessels Cleared	↓	3	5	-67%
	Vessels Arrived	↑	12	5	-20%
Pr. Rupert	Vessel Lineup in port	—	0	0	-100%
	Vessels Cleared	—	0	0	n/a
	Vessels Arrived	—	0	0	-100%
Vessels Inbound Sep 01, 2025 to Sep 07, 2025 (Week 05)					
Vancouver		11			
Prince Rupert		3			

1. Stocks in Store: (Page 2)

- Country stocks increased to 2.10 MMT in Week 03 utilizing 40% of the system's working capacity. Space in primary elevators is good.
- Total western port terminal stocks decreased to 0.81 MMT in Week 03, utilizing 42% of the working capacity.

2. Country Deliveries: (Page 3)

- Deliveries to primary elevators were 0.70 MMT in Week 03.

3. Port Performance: (Pages 3-5)

- Total western port unloads were 27% lower than the 4-week moving average and 39% lower than Week 03 last year.
- West Coast unloads were 1,942 cars (Vancouver 1,942 and Prince Rupert 0), 39% lower than the 4-week moving average and 56% lower than Week 03 last year.
- Thunder Bay had 1,299 unloads, 4% higher than the 4-week moving average and 38% higher than Week 03 last year.
- The total average terminal out-of-car time (OCT) increased to 21.0% from 4.5% the previous week. The OCT for Week 03 was 25.3% at Vancouver and 5.8% at Thunder Bay. At the time of publishing, Prince Rupert had not yet reported Week 03 OCT.

4. Shipments: (Page 5)

- Year-to-date Western Canadian shipments from port terminal elevators at Week 03 are 25% lower than the same period last year and 7% lower than the 3-year average.

5. Vessels: (Page 5)

- Vancouver vessel lineup for Week 04 2025-26 increased to 15 vessels (The current one-year average at Vancouver is 23 vessels). Of the 15, 4 were at berth and 11 were anchored at English Bay.
- Prince Rupert vessel lineup for Week 04 2025-26 remained at 0 vessels (The current one-year average at Prince Rupert is 4 vessels).
- Vessels cleared from Vancouver was 3 and from Prince Rupert was 0 in Week 04 2025-26.

1. Stocks in Store

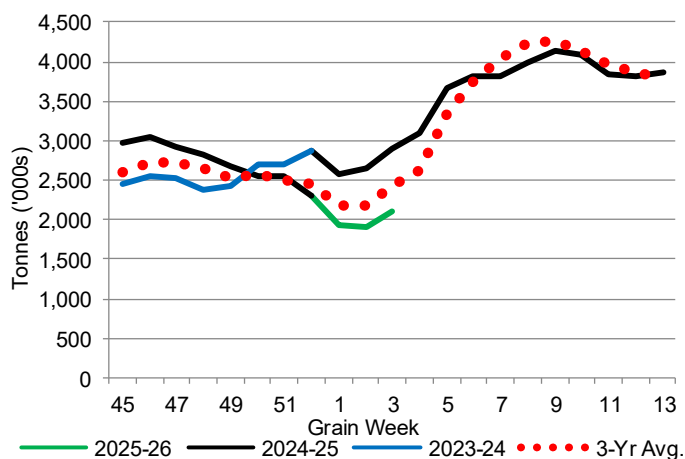
1-A1 Country Stocks ('000 tonnes) – Week 03

	MB	SK	AB	BC	Total
2025-26	457.6	1,020.5	615.1	9.2	2,102.4
2024-25	584.0	1,420.8	869.7	16.3	2,890.8
3-Yr Avg.	525.1	1,173.8	705.0	15.0	2,419.0
Var % - LY	-22%	-28%	-29%	-44%	-27%
Var % 3-Yr Avg.	-13%	-13%	-13%	-39%	-13%
Storage Capacity	1,635.0	4,019.4	2,490.4	30.6	8,175.4
Estimated Working Capacity	1,062.7	2,612.6	1,618.7	19.9	5,313.9
25-26 % of Wkg Cap	43%	39%	38%	46%	40%

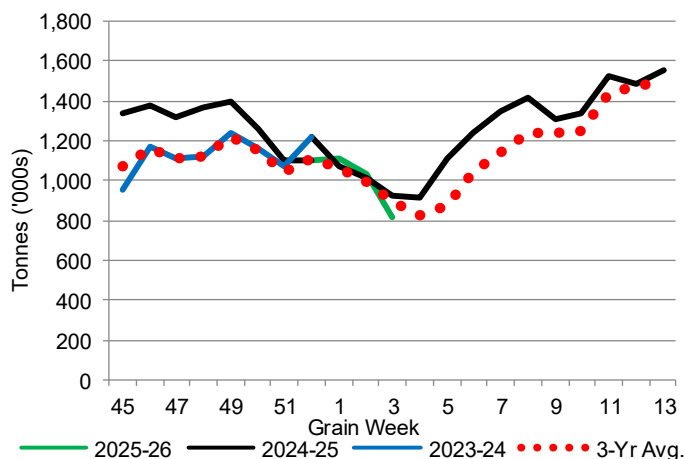
1-B1 Terminal Stocks ('000 tonnes) – Week 03

	VC	PR	West Coast	CH	TB	Total
2025-26	428.3	11.4	439.7	-	372.5	812.2
2024-25	572.8	46.0	618.8	0.7	300.9	920.4
3-Yr Avg.	505.4	23.7	529.1	0.5	367.1	896.7
Var % - LY	-25%	-75%	-29%	-100%	24%	-12%
Var % 3-Yr Avg.	-15%	-52%	-17%	-100%	1%	-9%
Storage Capacity	1,275.5	209.5	1,485.0	140.0	1,127.5	2,752.5
Estimated Working Capacity	892.9	146.7	1,039.6	98.0	789.2	1,926.8
25-26 % of Wkg Cap	48%	8%	42%	0%	47%	42%

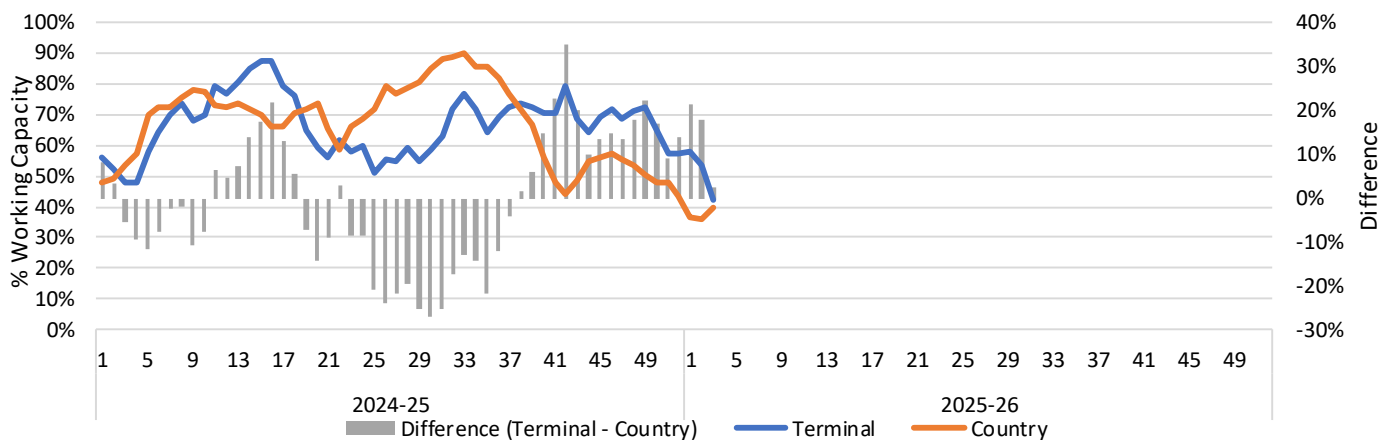
1-A2 Weekly Country Stocks in Store



1-B2 Weekly Terminal Stocks in Store



1-C Weekly Stock Balance

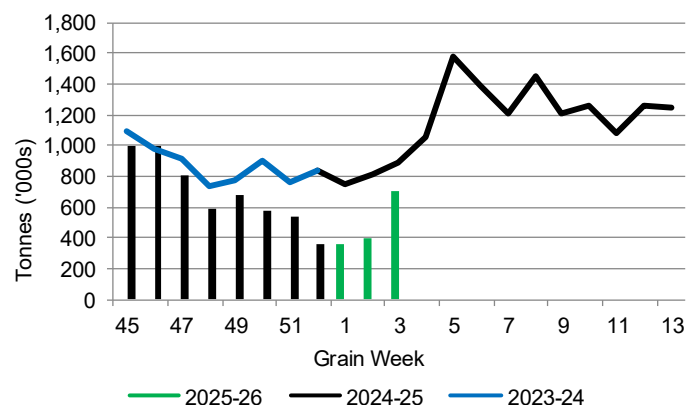


2. Country Deliveries

2-A Country Deliveries ('000 tonnes) – Week 03

	MB	SK	AB	BC	Total
2025-26	152.4	296.1	249.1	2.1	699.7
2024-25	158.3	430.7	287.2	6.5	882.7
4 Wk Avg	101.5	210.2	138.4	2.3	452.4
Var % to Last Year	-4%	-31%	-13%	-68%	-21%
Var % To 4 Wk Avg	50%	41%	80%	-9%	55%

2-B 2025-26 Weekly Country Deliveries



3. Port Performance

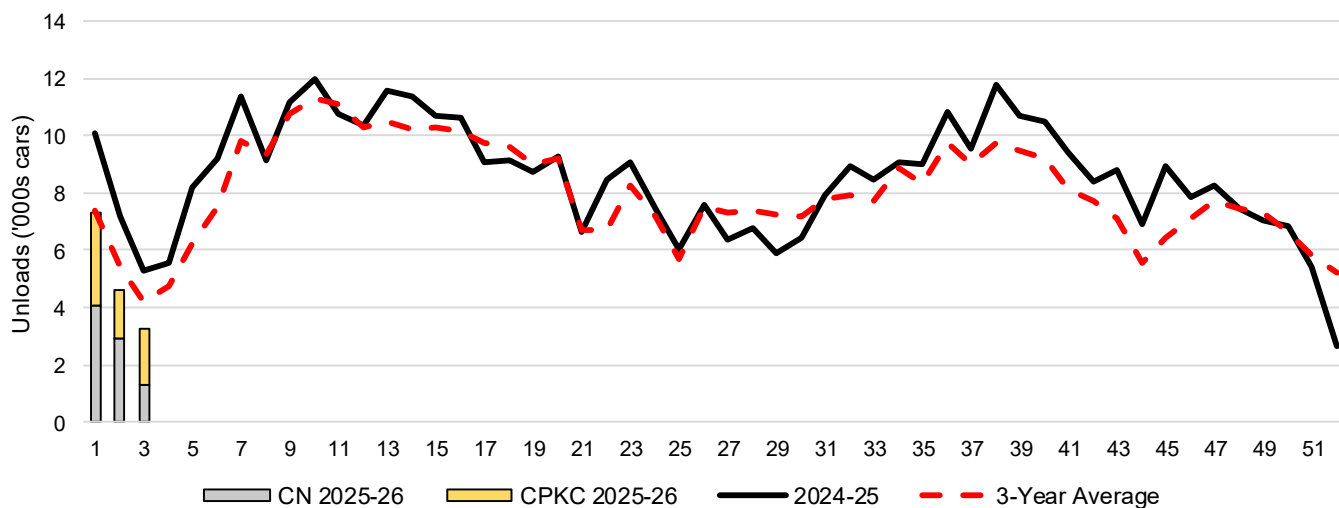
3-A Weekly Unloads by Port (Cars) – This Year for Week 03, 4-Week Moving Average and Variances

	Vancouver	Prince Rupert	West Coast	Thunder Bay	Churchill	Total
2025-26	1,942	-	1,942	1,299	-	3,241
2024-25	4,372	n/a	4,372	944	n/a	5,316
4-Wk Avg.	3,031	165	3,197	1,254	-	4,450
Var % to Last Year	-56%	n/a	-56%	38%	n/a	-39%
Var % to 4-Wk Avg.	-36%	-100%	-39%	4%	n/a	-27%

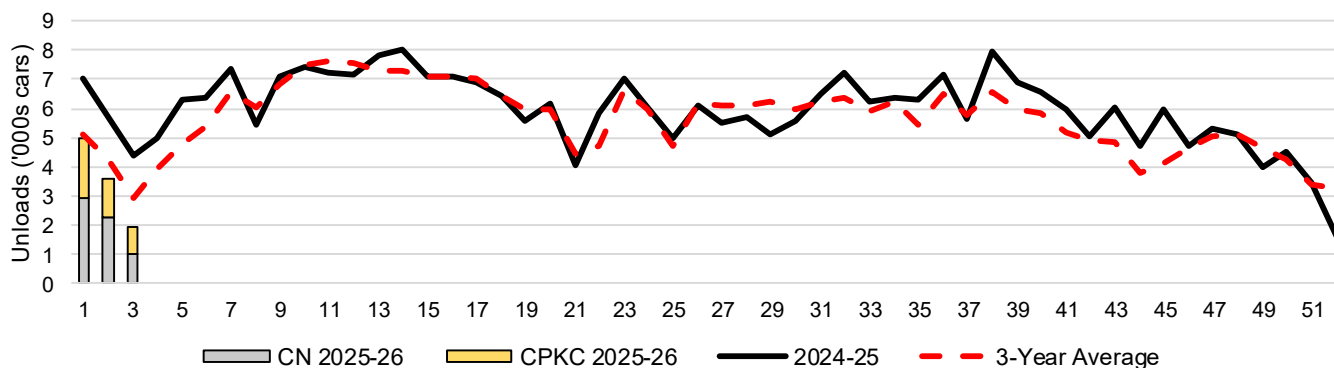
3-B Terminal Unloads by Port – This Year-to-Date as at Week 03 and Variances

YTD Unloads (cars)	Vancouver	Prince Rupert	West Coast	Thunder Bay	Churchill	Total
2025-26	10,534	510	11,044	4,124	-	15,168
2024-25	17,127	1,401	18,528	4,035	-	22,563
3-Yr Avg	12,271	651	12,922	4,053	-	16,975
Var % to Last Year	-38%	-64%	-40%	2%	n/a	-33%
Var % to 3-Yr Avg	-14%	-22%	-15%	2%	n/a	-11%
YTD Unloads ('000 tonnes)						
2025-26	1,005.9	47.0	1,052.9	399.5	-	1,452.4
2024-25	1,597.2	129.7	1,726.9	388.0	-	2,114.9
3-Yr Avg.	1,155.2	60.2	1,215.4	390.4	-	1,605.8
Var % to Last Year	-37%	-64%	-39%	3%	n/a	-31%
Var % to 3-Yr Avg.	-13%	-22%	-13%	2%	n/a	-10%

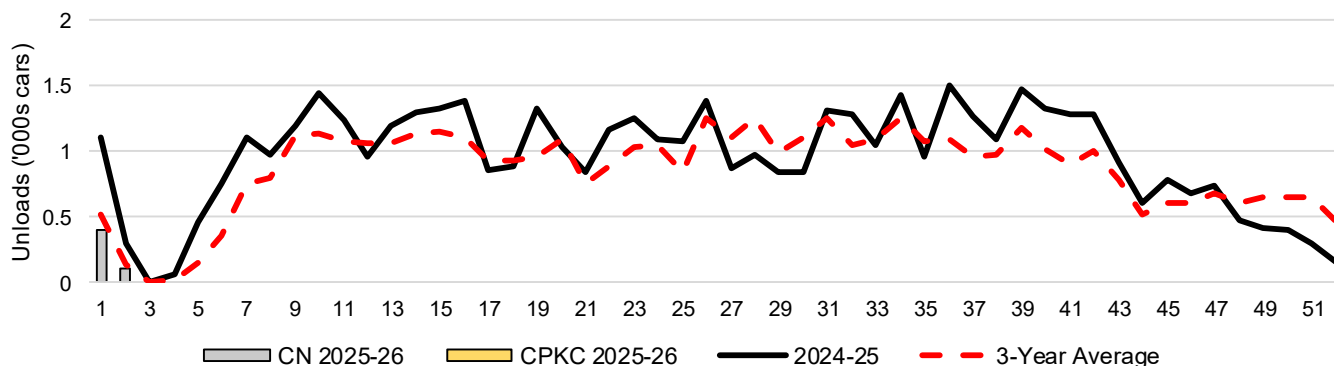
3-C Western Port Terminal Unloads (cars), Total by Carrier, This Year vs. Last Year and the 3-Year Average



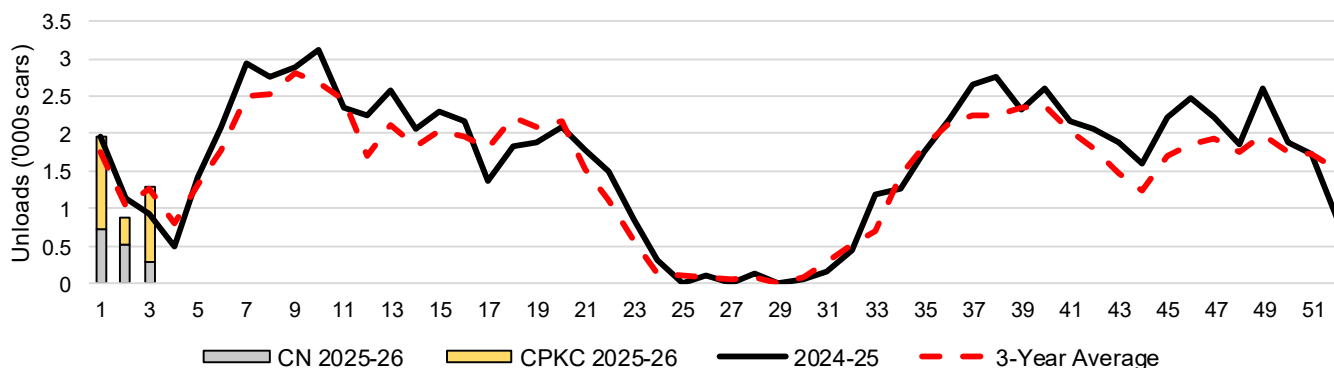
3-D Vancouver Terminal Unloads (cars), Total by Carrier, This Year vs. Last Year and the 3-Year Average



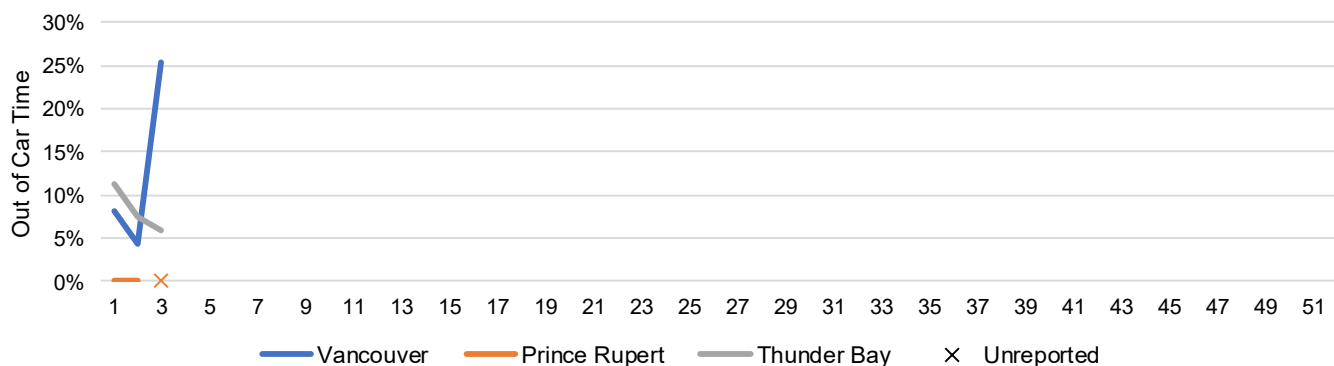
3-E Prince Rupert Terminal Unloads (cars), Total by Carrier, This Year vs. Last Year and the 3-Year Average



3-F Thunder Bay Terminal Unloads (cars), Total by Carrier, This Year vs. Last Year and the 3-Year Average



3-G Weekly Out-of-Car Time (% of hours out-of-cars / total hours working)



Out-of-car time is measured weekly and uses data from terminal elevators on the total number of hours the facilities are open & staffed (including overtime hours) and the corresponding number of hours that terminals have no railcars available to unload. The measure is expressed as a percentage (hours without cars to the total number of hours working).

3-H Monthly Unloads (cars) – This Year vs. Last Year and the 3-Year Average to Week 52 2024-25

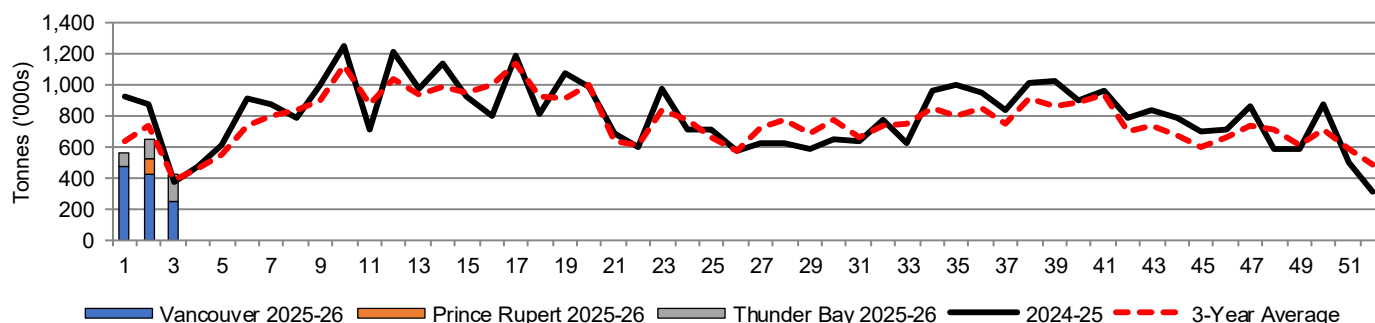
Months	Aug	Sep	Oct	Nov	Dec	Jan	Feb	Mar	Apr	May	Jun	Jul
Weeks	1-4	5-8	9-13	14-17	18-21	22-26	27-30	31-34	35-39	40-43	44-47	48-52
2024-25	28,103	37,927	55,870	41,829	33,858	38,654	25,580	34,401	51,849	37,118	31,949	29,384
2023-24	18,158	30,245	49,223	35,668	32,949	27,216	30,125	28,067	43,763	35,188	27,940	34,684
3-Yr Avg.	19,747	32,901	53,921	40,408	34,590	35,315	29,124	32,312	46,302	32,166	26,765	33,154
Var % to Last Year	55%	25%	14%	17%	3%	42%	-15%	23%	18%	5%	14%	-15%
Var % to 3-Yr Avg.	42%	15%	4%	4%	-2%	9%	-12%	6%	12%	15%	19%	-11%

4. Shipments

4-A Shipments from Port Terminals ('000 tonnes) – This Year-to-Date as at Week 03 and Variance to Last Year-to-Date

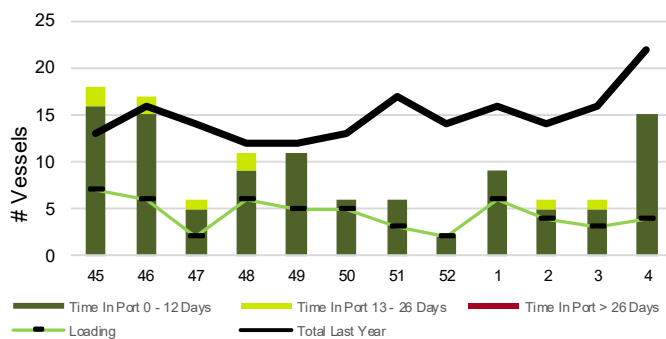
	Vancouver	Prince Rupert	West Coast	Thunder Bay	Churchill	Total
2025-26	1,146.3	106.3	1,252.6	371.2	-	1,623.8
2024-25	1,420.1	222.7	1,642.8	511.7	-	2,154.5
3-Yr Avg.	1,189.9	135.3	1,325.2	418.5	-	1,743.7
Var % to Last Year	-19%	-52%	-24%	-27%	n/a	-25%
Var % to 3-Yr Avg.	-4%	-21%	-5%	-11%	n/a	-7%

4-B Weekly Shipments ('000 tonnes) from Port Terminals – This Year vs Last Year and the 3-Year Average

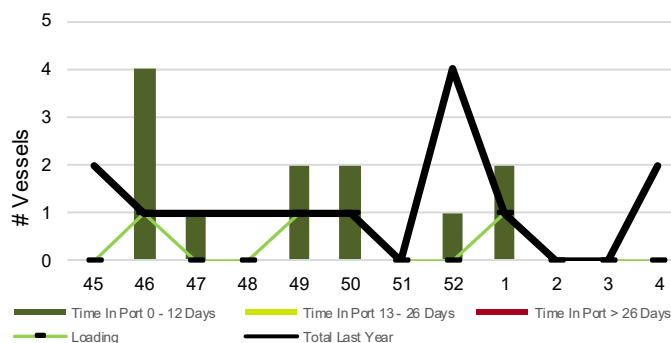


5. Vessels

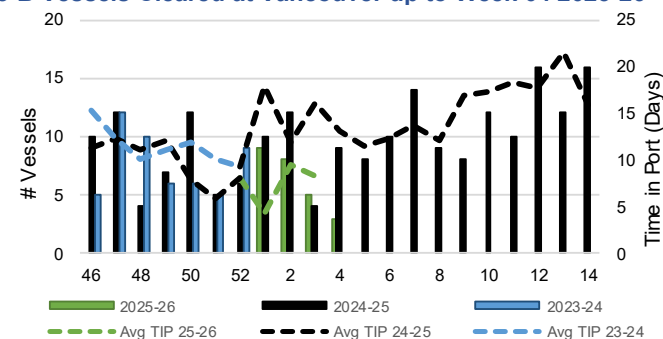
5-A Vessel Lineup at Vancouver as of Week 04 2025-26



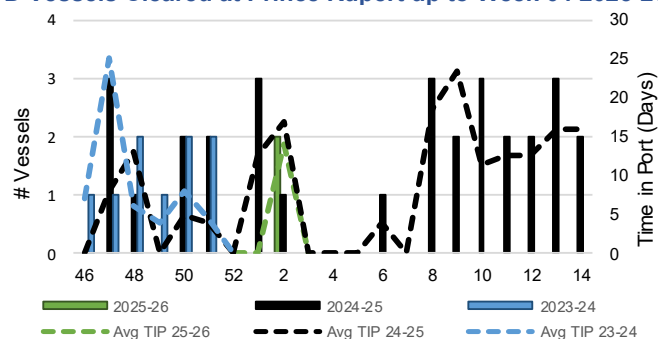
5-C Vessel Lineup at Prince Rupert as of Week 04 2025-26



5-B Vessels Cleared at Vancouver up to Week 04 2025-26



5-D Vessels Cleared at Prince Rupert up to Week 04 2025-26



Note: The 'Time in Port' measure for 5-A and 5-C is calculated as how long each vessel in the lineup has been in port as at Sunday 23:59 of that grain week. The 'Avg Time in Port (TIP)' measure for 5-B and 5-D is the average number of days that all vessels which cleared that week were in port. These measures use vessel data provided by the BC Chamber of Shipping and Pacific Pilotage Authority.