

# Grain Monitoring Program

## Weekly Performance Update

August 19, 2025

For Grain Week 01 2025-26 CY  
August 01, 2025 to August 10, 2025

### Summary

	Week 01	Week 52	Var. from Last Year	
<b>1. Stocks in Store ('000 tonnes)</b>				
Country Elevators	↓ 1,939.3	2,313.2	-25%	
% of Working Capacity	36%	44%		
Terminal Elevators	↑ 1,111.4	1,104.6	4%	
% of Working Capacity	58%	57%		
<b>2. Country Deliveries ('000 tonnes)</b>				
Country Deliveries	↓ 352.5	355.5	-53%	
<b>3. Port Performance (Cars)</b>				
Vancouver Unloads	↑ 4,993	1,591	-29%	
Prince Rupert Unloads	↑ 400	151	-64%	
Churchill Unloads	— 0	0	n/a	
Thunder Bay Unloads	↑ 1,457	891	-26%	
Total Weekly Unloads	↑ 6,850	2,633	-32%	
4-Week Rolling Average	↓ 5,443	5,484	-6%	
Var. to 4-Week Rolling Average	26%	-52%		
YTD Unloads	6,850	446,540	-32%	
Weekly Out-of-Car Time	↑ 8.8%	1.7%	-46.7%	
<b>4. Terminal Shipments Year-to-Date ('000 tonnes)</b>				
Vancouver	↓ 476.3	29,386.1	-26%	
Prince Rupert	↓ 0.0	4,908.1	-100%	
Churchill	— 0.0	0.0	n/a	
Thunder Bay	↓ 85.1	7,362.1	-25%	
Total Western Canada	↓ 561.4	41,656.3	-39%	
<b>5. Vessels as at Aug 17, 2025</b>				
	Week 02	Week 01	Var. from Last Year	
Vancouver	Vessel Lineup in port	↓ 6	9	-57%
	Vessels Cleared	↓ 8	9	-33%
	Vessels Arrived	↓ 5	16	-50%
Pr. Rupert	Vessel Lineup in port	↓ 0	2	n/a
	Vessels Cleared	↑ 2	0	100%
	Vessels Arrived	↓ 0	1	n/a
<b>Vessels Inbound Aug 18, 2025 to Aug 24, 2025 (Week 03)</b>				
Vancouver	5			
Prince Rupert	0			

### Note to Readers:

The GMP Weekly Report for Week 01 starts the crop year on August 1st and can reflect a different number of days when compared to last year.

- Week 52 2024-25 | Jul 28 – Jul 31 (4 days)
- Week 01 2024-25 | Aug 01 – Aug 11 (11 days)
- Week 01 2025-26 | Aug 01 – Aug 10 (10 days)

### 1. Stocks in Store: (Page 2)

- Country stocks decreased to 1.94 MMT in Week 01 utilizing 36% of the system's working capacity. Space in primary elevators is good.
- Total western port terminal stocks increased to 1.11 MMT in Week 01, utilizing 58% of the working capacity.

### 2. Country Deliveries: (Page 3)

- Deliveries to primary elevators were 0.35 MMT in Week 01.

### 3. Port Performance: (Pages 3-5)

- Total western port unloads were 26% higher than the 4-week moving average and 32% lower than Week 01 last year.
- West Coast unloads were 5,393 cars (Vancouver 4,993 and Prince Rupert 400), 37% higher than the 4-week moving average and 34% lower than Week 01 last year.
- Thunder Bay had 1,457 unloads, 3% lower than the 4-week moving average and 26% lower than Week 01 last year.
- The total average terminal out-of-car time (OCT) increased to 8.8% from 1.7% the previous week. The OCT for Week 01 was 8.9% at Vancouver and 8.3% at Thunder Bay. At the time of publishing, Prince Rupert had not yet reported Week 01 OCT.

### 4. Shipments: (Page 5)

- Year-to-date Western Canadian shipments from port terminal elevators at Week 01 are 39% lower than the same period last year and 11% lower than the 3-year average.

### 5. Vessels: (Page 5)

- Vancouver vessel lineup for Week 02 2025-26 decreased to 6 vessels (The current one-year average at Vancouver is 24 vessels). Of the 6, 4 were at berth and 2 were anchored at English Bay.
- Prince Rupert vessel lineup for Week 02 2025-26 decreased to 0 vessels (The current one-year average at Prince Rupert is 4 vessels).
- Vessels cleared from Vancouver was 8 and from Prince Rupert was 2 in Week 02 2025-26.

# 1. Stocks in Store

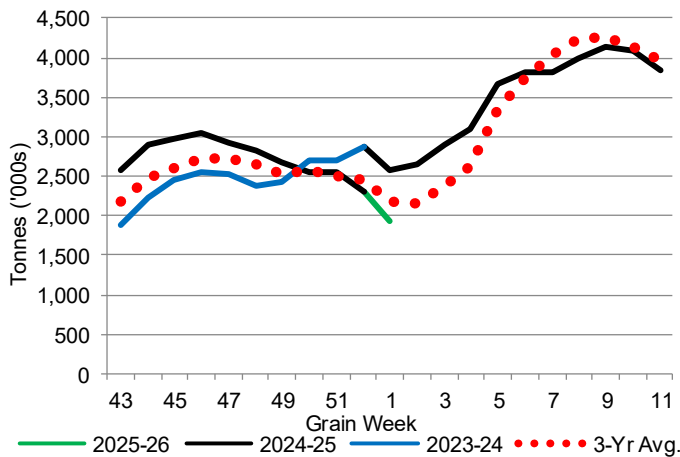
1-A1 Country Stocks ('000 tonnes) – Week 01

	MB	SK	AB	BC	Total
2025-26	412.0	1,020.3	499.0	8.0	1,939.3
2024-25	531.7	1,302.8	727.4	17.3	2,579.2
3-Yr Avg.	499.5	1,089.7	580.6	15.3	2,185.0
Var % - LY	-23%	-22%	-31%	-54%	-25%
Var % 3-Yr Avg.	-18%	-6%	-14%	-48%	-11%
Storage Capacity	1,622.8	4,026.5	2,497.2	30.6	8,177.1
Estimated Working Capacity	1,054.8	2,617.2	1,623.2	19.9	5,315.1
25-26 % of Wkg Cap	39%	39%	31%	40%	36%

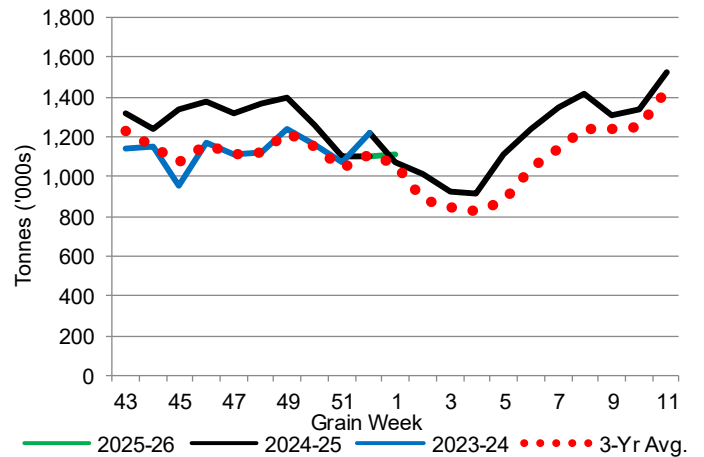
1-B1 Terminal Stocks ('000 tonnes) – Week 01

	VC	PR	West Coast	CH	TB	Total
2025-26	593.2	57.0	650.2	-	461.2	1,111.4
2024-25	600.3	48.1	648.4	n/a	425.8	1,074.2
3-Yr Avg.	580.8	39.6	620.4	0.2	444.4	1,065.0
Var % - LY	-1%	19%	0%	n/a	8%	3%
Var % 3-Yr Avg.	2%	44%	5%	-100%	4%	4%
Storage Capacity	1,275.5	209.5	1,485.0	140.0	1,127.5	2,752.5
Estimated Working Capacity	892.9	146.7	1,039.6	98.0	789.2	1,926.8
25-26 % of Wkg Cap	66%	39%	63%	0%	58%	58%

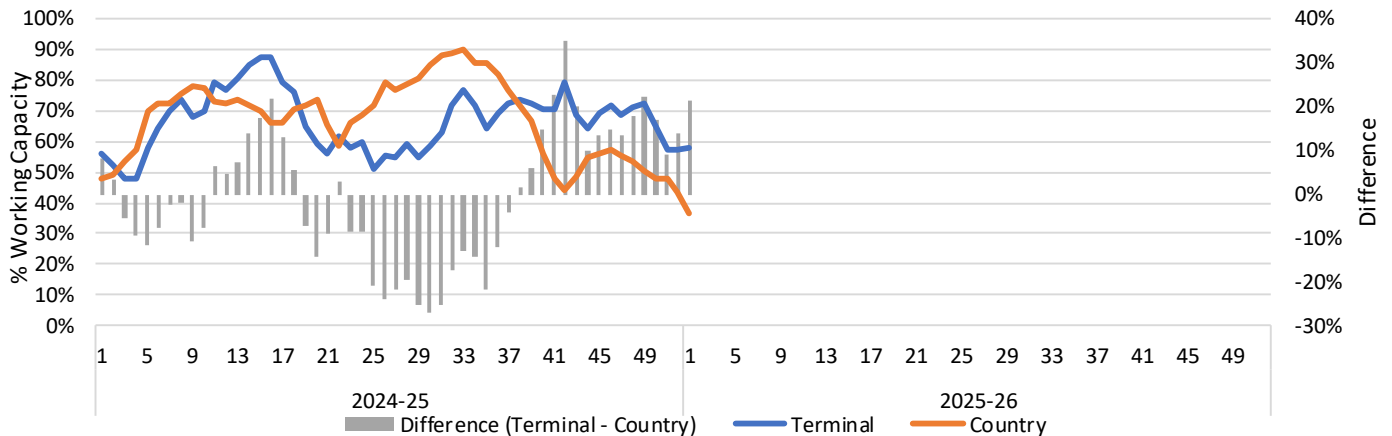
1-A2 Weekly Country Stocks in Store



1-B2 Weekly Terminal Stocks in Store



1-C Weekly Stock Balance

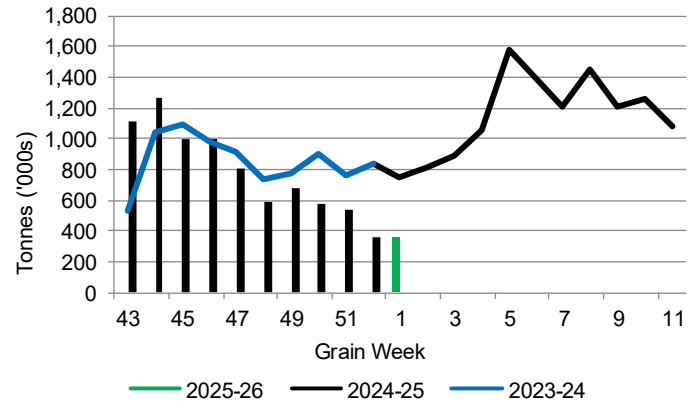


## 2. Country Deliveries

2-A Country Deliveries ('000 tonnes) – Week 01

	MB	SK	AB	BC	Total
2025-26	78.8	176.6	94.4	2.7	352.5
2024-25	121.7	371.7	247.1	2.2	742.7
4 Wk Avg	98.9	246.7	105.7	2.1	453.4
Var % to Last Year	-35%	-53%	-62%	23%	-53%
Var % To 4 Wk Avg	-20%	-28%	-11%	29%	-22%

2-B 2025-26 Weekly Country Deliveries



## 3. Port Performance

3-A Weekly Unloads by Port (Cars) – This Year for Week 01, 4-Week Moving Average and Variances

	Vancouver	Prince Rupert	West Coast	Thunder Bay	Churchill	Total
2025-26	4,993	400	5,393	1,457	-	6,850
2024-25	7,027	1,101	8,128	1,964	n/a	10,092
4-Wk Avg.	3,635	313	3,949	1,495	-	5,443
Var % to Last Year	-29%	-64%	-34%	-26%	n/a	-32%
Var % to 4-Wk Avg.	37%	28%	37%	-3%	n/a	26%

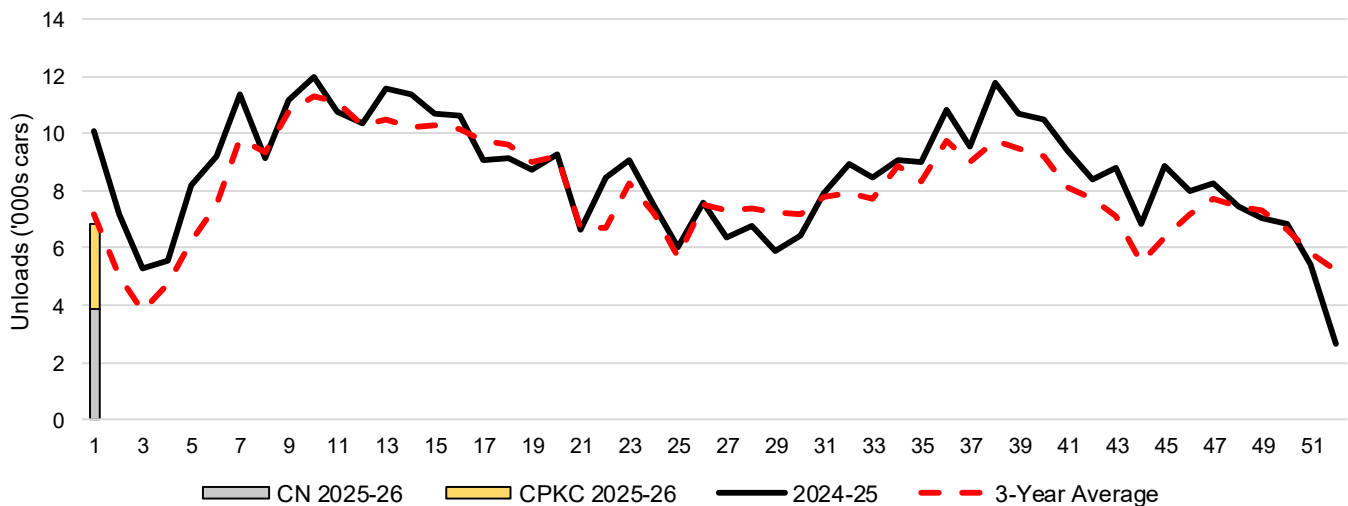
3-B Terminal Unloads by Port – This Year-to-Date as at Week 01 and Variances

YTD Unloads (cars)	Vancouver	Prince Rupert	West Coast	Thunder Bay	Churchill	Total
2025-26	4,993	400	5,393	1,457	-	6,850
2024-25	7,027	1,101	8,128	1,964	-	10,092
3-Yr Avg	5,099	514	5,613	1,593	-	7,206
Var % to Last Year	-29%	-64%	-34%	-26%	n/a	-32%
Var % to 3-Yr Avg	-2%	-22%	-4%	-9%	n/a	-5%

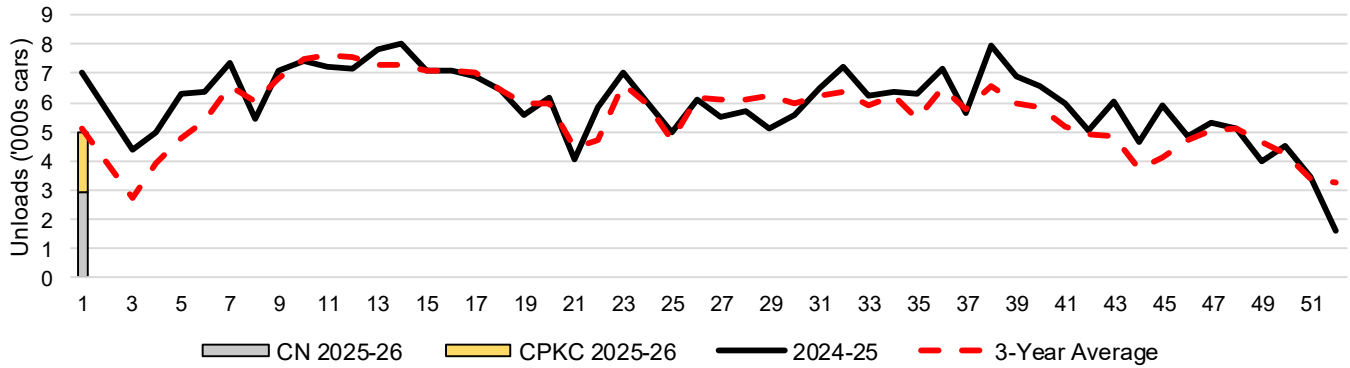
  

YTD Unloads ('000 tonnes)	Vancouver	Prince Rupert	West Coast	Thunder Bay	Churchill	Total
2025-26	473.0	37.1	510.1	140.1	-	650.2
2024-25	660.1	100.7	760.8	191.1	-	951.9
3-Yr Avg.	480.6	47.2	527.8	154.9	-	682.7
Var % to Last Year	-28%	-63%	-33%	-27%	n/a	-32%
Var % to 3-Yr Avg.	-2%	-21%	-3%	-10%	n/a	-5%

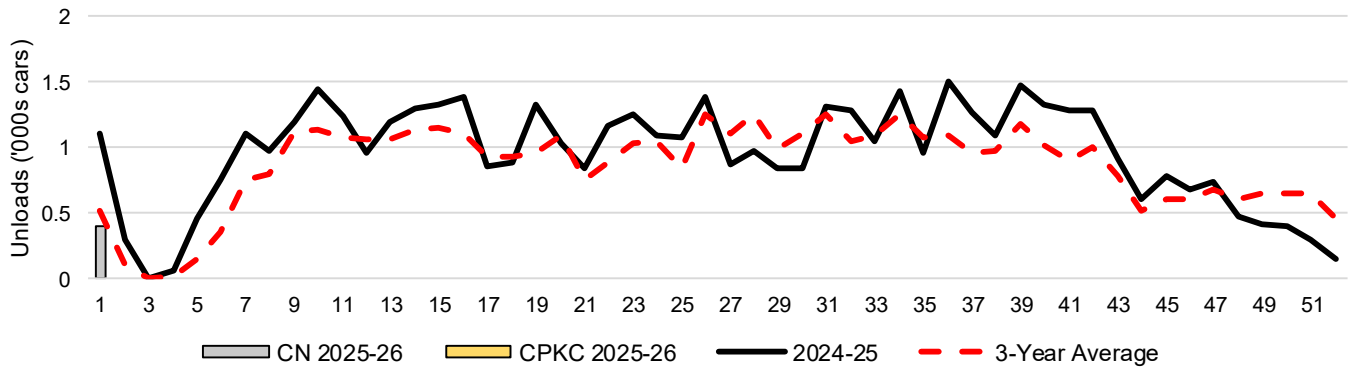
3-C Western Port Terminal Unloads (cars), Total by Carrier, This Year vs. Last Year and the 3-Year Average



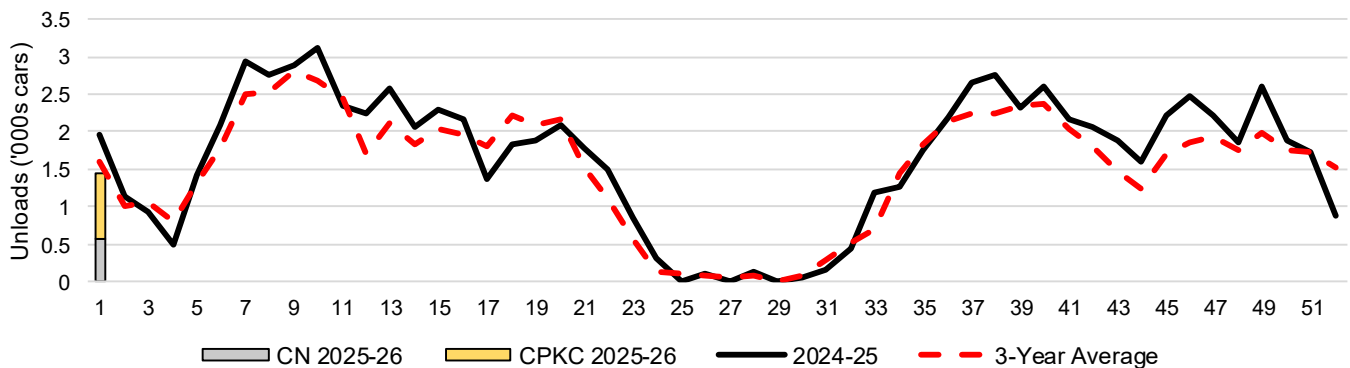
### 3-D Vancouver Terminal Unloads (cars), Total by Carrier, This Year vs. Last Year and the 3-Year Average



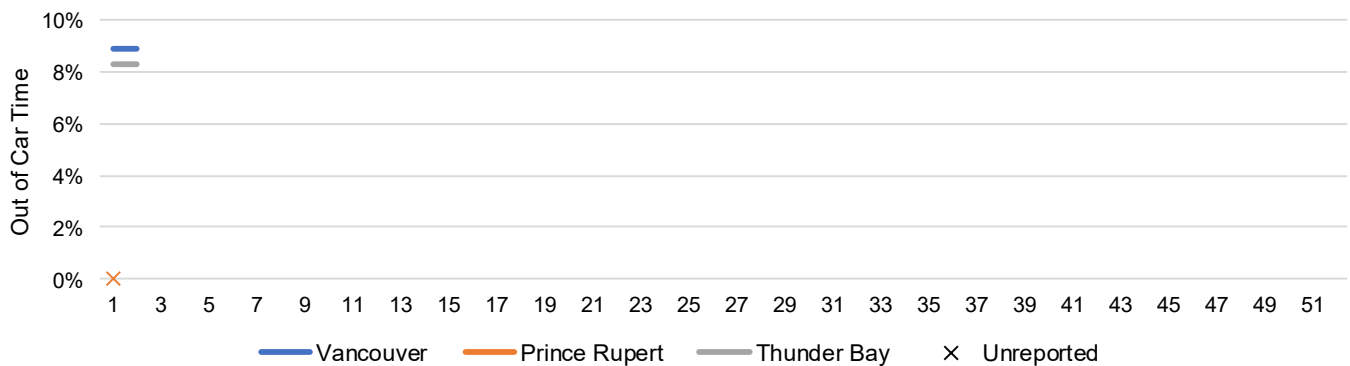
### 3-E Prince Rupert Terminal Unloads (cars), Total by Carrier, This Year vs. Last Year and the 3-Year Average



### 3-F Thunder Bay Terminal Unloads (cars), Total by Carrier, This Year vs. Last Year and the 3-Year Average



### 3-G Weekly Out-of-Car Time (% of hours out-of-cars / total hours working)



Out-of-car time is measured weekly and uses data from terminal elevators on the total number of hours the facilities are open & staffed (including overtime hours) and the corresponding number of hours that terminals have no railcars available to unload. The measure is expressed as a percentage (hours without cars to the total number of hours working).

### 3-H Monthly Unloads (cars) – This Year vs. Last Year and the 3-Year Average to Week 52 2024-25

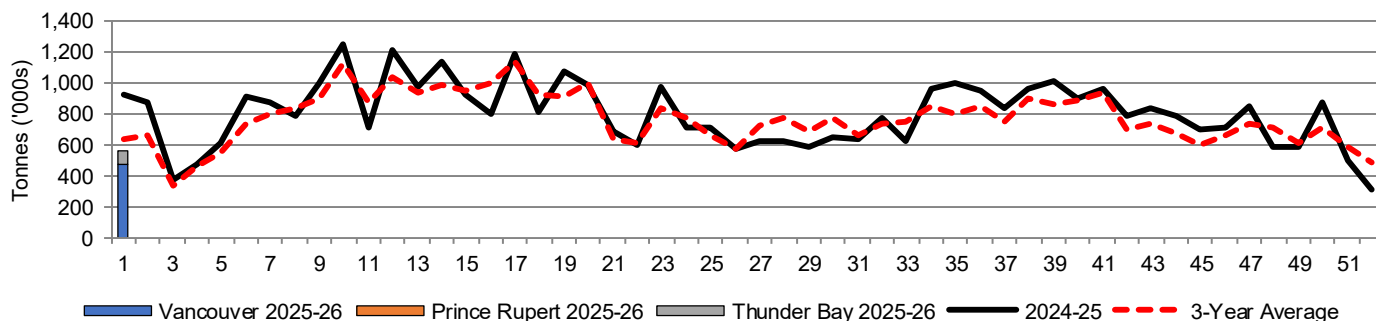
Months	Aug	Sep	Oct	Nov	Dec	Jan	Feb	Mar	Apr	May	Jun	Jul
Weeks	1-4	5-8	9-13	14-17	18-21	22-26	27-30	31-34	35-39	40-43	44-47	48-52
2024-25	28,103	37,927	55,870	41,829	33,858	38,654	25,580	34,401	51,849	37,118	31,966	29,385
2023-24	18,158	30,245	49,223	35,668	32,949	27,216	30,125	28,067	43,763	35,188	27,940	34,684
3-Yr Avg.	19,747	32,901	53,921	40,408	34,590	35,315	29,124	32,312	46,302	32,166	26,770	33,154
Var % to Last Year	55%	25%	14%	17%	3%	42%	-15%	23%	18%	5%	14%	-15%
Var % to 3-Yr Avg.	42%	15%	4%	4%	-2%	9%	-12%	6%	12%	15%	19%	-11%

## 4. Shipments

### 4-A Shipments from Port Terminals ('000 tonnes) – This Year-to-Date as at Week 01 and Variance to Last Year-to-Date

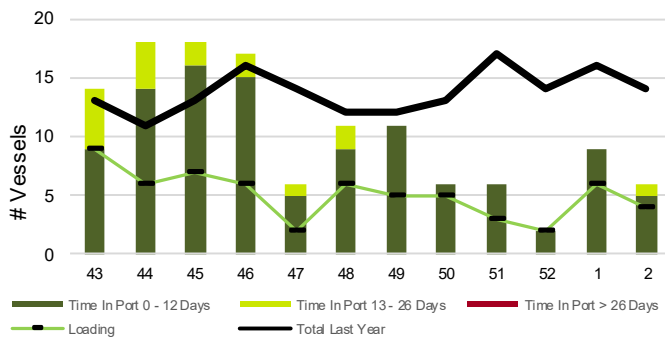
	Vancouver	Prince Rupert	West Coast	Thunder Bay	Churchill	Total
2025-26	476.3	-	476.3	85.1	-	561.4
2024-25	644.5	159.4	803.9	113.9	-	917.8
3-Yr Avg.	473.7	78.8	552.5	80.8	-	633.3
Var % to Last Year	-26%	-100%	-41%	-25%	n/a	-39%
Var % to 3-Yr Avg.	1%	-100%	-14%	5%	n/a	-11%

### 4-B Weekly Shipments ('000 tonnes) from Port Terminals – This Year vs Last Year and the 3-Year Average

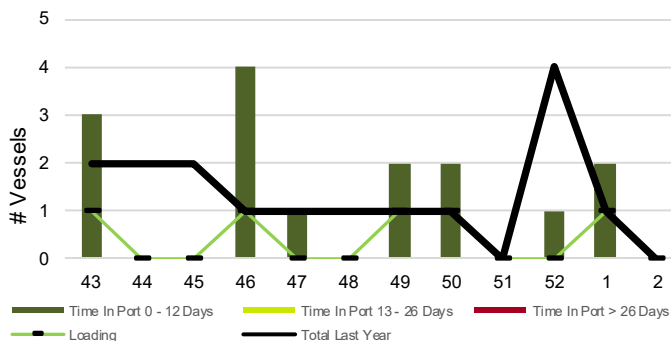


## 5. Vessels

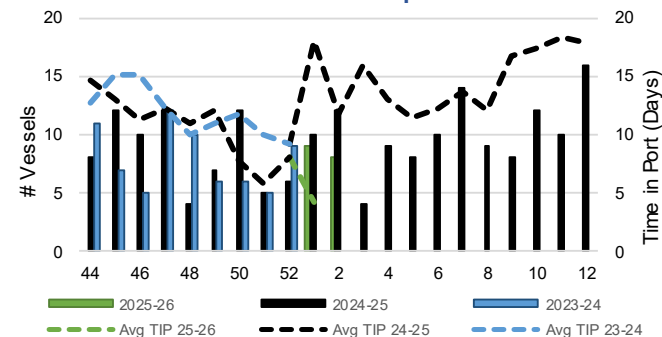
### 5-A Vessel Lineup at Vancouver as of Week 02 2025-26



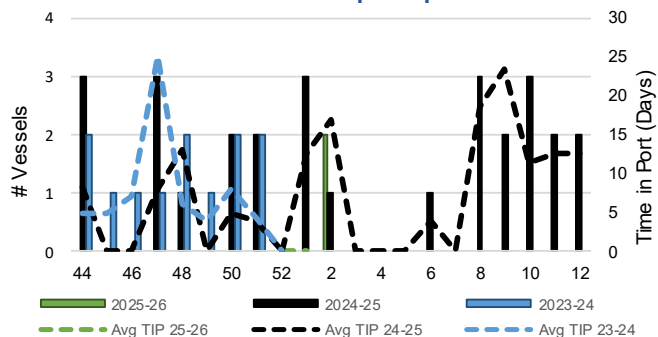
### 5-C Vessel Lineup at Prince Rupert as of Week 02 2025-26



### 5-B Vessels Cleared at Vancouver up to Week 02 2025-26



### 5-D Vessels Cleared at Prince Rupert up to Week 02 2025-26



Note: The 'Time in Port' measure for 5-A and 5-C is calculated as how long each vessel in the lineup has been in port as at Sunday 23:59 of that grain week. The 'Avg Time in Port (TIP)' measure for 5-B and 5-D is the average number of days that all vessels which cleared that week were in port. These measures use vessel data provided by the BC Chamber of Shipping and Pacific Pilotage Authority.