

Grain Monitoring Program

Weekly Performance Update

August 27, 2024

For Grain Week 02 2024-25 CY
August 12, 2024 to August 18, 2024

Summary

	Week 02	Week 01	Var. from Last Year	
1. Stocks in Store ('000 tonnes)				
Country Elevators	↑ 2,655.2	2,579.2	35%	
% of Working Capacity	49%	48%		
Terminal Elevators	↓ 1,011.6	1,074.2	7%	
% of Working Capacity	53%	56%		
2. Country Deliveries ('000 tonnes)				
Country Deliveries	↑ 807.2	742.7	120%	
3. Port Performance (Cars)				
Vancouver Unloads	↓ 5,637	7,027	64%	
Prince Rupert Unloads	↓ 300	1,101	n/a	
Churchill Unloads	— 0	0	n/a	
Thunder Bay Unloads	↓ 1,128	1,964	5%	
Total Weekly Unloads	↓ 7,065	10,092	56%	
4-Week Rolling Average	↑ 6,227	5,807		
Var. to 4-Week Rolling Average	13%	74%		
YTD Unloads	17,157	10,092	87%	
Weekly Out-of-Car Time	↑ 20.0%	11.1%	50.1%	
4. Terminal Shipments Year-to-Date ('000 tonnes)				
Vancouver	↑ 1,191.5	644.5	68%	
Prince Rupert	↑ 222.7	159.4	189%	
Churchill	— 0.0	0.0	n/a	
Thunder Bay	↑ 374.6	113.9	20%	
Total Western Canada	↑ 1,788.8	917.8	63%	
5. Vessels as at Aug 25, 2024				
	Week 03	Week 02	Var. from Last Year	
Vancouver	Vessel Lineup in port	↑ 16	14	7%
	Vessels Cleared	↓ 4	12	-56%
	Vessels Arrived	↓ 6	10	-45%
Pr. Rupert	Vessel Lineup in port	— 0	0	n/a
	Vessels Cleared	↓ 0	1	n/a
	Vessels Arrived	— 0	0	n/a
Vessels Inbound Aug 26, 2024 to Sep 01, 2024 (Week 04)				
Vancouver	13			
Prince Rupert	2			

1. Stocks in Store: (Page 2)

- Country stocks increased to 2.66 MMT in Week 02 utilizing 49% of the system's working capacity. Space in primary elevators is good.
- Total western port terminal stocks decreased to 1.01 MMT in Week 02, utilizing 53% of the working capacity.

2. Country Deliveries: (Page 3)

- Deliveries to primary elevators were 0.81 MMT in Week 02.

3. Port Performance: (Pages 3-5)

- Total western port unloads were 13% higher than the 4-week moving average and 56% higher than Week 02 last year.
- West Coast unloads were 5,937 cars (Vancouver 5,637 and Prince Rupert 300), 21% higher than the 4-week moving average and 72% higher than Week 02 last year.
- Thunder Bay unloads were 1,128 cars, 14% lower than the 4-week moving average and 5% higher than Week 02 last year.
- The total average terminal out-of-car time (OCT) increased to 20.0% from 11.1% the previous week. The OCT for Week 02 was 25.9% at Vancouver, and 4.7% at Thunder Bay. At the time of publishing, Prince Rupert had not yet reported Week 02 OCT.

4. Shipments: (Page 5)

- Year-to-date Western Canadian shipments from port terminal elevators at Week 02 are 63% higher than the same period last year and 44% higher than the 3-year average.

5. Vessels: (Page 5)

- Vancouver vessel lineup for Week 03 2024-25 increased to 16 vessels (The current one-year average at Vancouver is 20 vessels). Of the 16, 8 were at berth, 4 were anchored at English Bay, 0 were anchored at Burrard Inlet and 4 were anchored at Vancouver Island.
- Prince Rupert vessel lineup for Week 03 2024-25 remained at 0 vessels (The current one-year average at Prince Rupert is 2 vessels).
- Vessels cleared from Vancouver was 4 and from Prince Rupert was 0 in Week 03 2024-25.

1. Stocks in Store

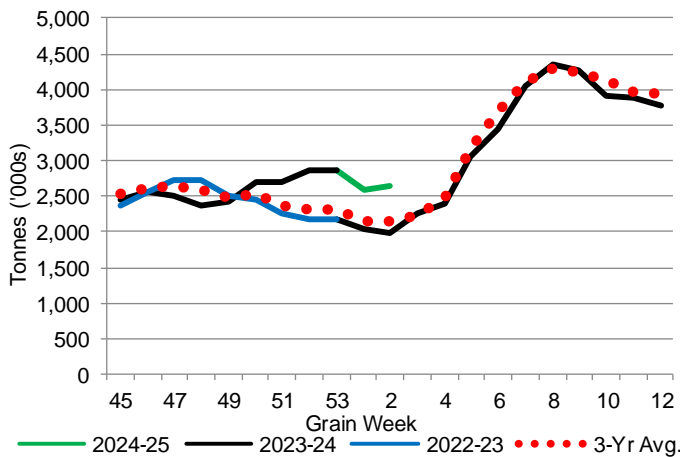
1-A1 Country Stocks ('000 tonnes) – Week 02

	MB	SK	AB	BC	Total
2024-25	564.4	1,251.7	827.2	11.9	2,655.2
2023-24	520.4	900.0	532.8	18.9	1,972.1
3-Yr Avg.	482.6	1,043.1	622.7	13.3	2,161.7
Var % - LY	8%	39%	55%	-37%	35%
Var % 3-Yr Avg.	17%	20%	33%	-11%	23%
Storage Capacity	1,610.0	4,224.4	2,460.4	39.7	8,334.5
Estimated Working Capacity	1,046.5	2,745.9	1,599.2	25.8	5,417.4
24-25 % of Wkg Cap	54%	46%	52%	46%	49%

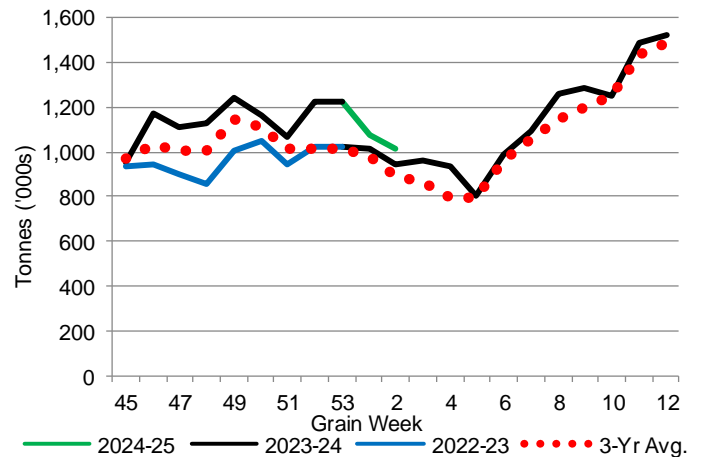
1-B1 Terminal Stocks ('000 tonnes) – Week 02

	VC	PR	West Coast	CH	TB	Total
2024-25	556.5	46.0	602.5	0.7	408.4	1,011.6
2023-24	542.4	13.7	556.1	0.7	388.2	945.0
3-Yr Avg.	496.7	24.8	521.5	0.7	367.3	889.5
Var % - LY	3%	236%	8%	0%	5%	7%
Var % 3-Yr Avg.	12%	85%	16%	0%	11%	14%
Storage Capacity	1,275.5	209.5	1,485.0	140.0	1,127.5	2,752.5
Estimated Working Capacity	892.9	146.7	1,039.6	98.0	789.2	1,926.8
24-25 % of Wkg Cap	62%	31%	58%	1%	52%	53%

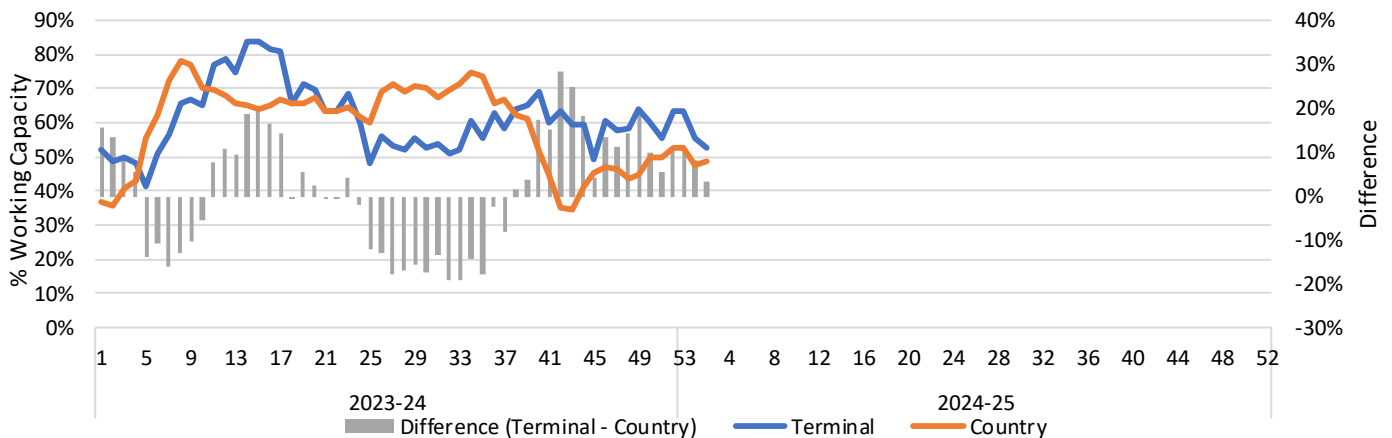
1-A2 Weekly Country Stocks in Store



1-B2 Weekly Terminal Stocks in Store



1-C Weekly Stock Balance

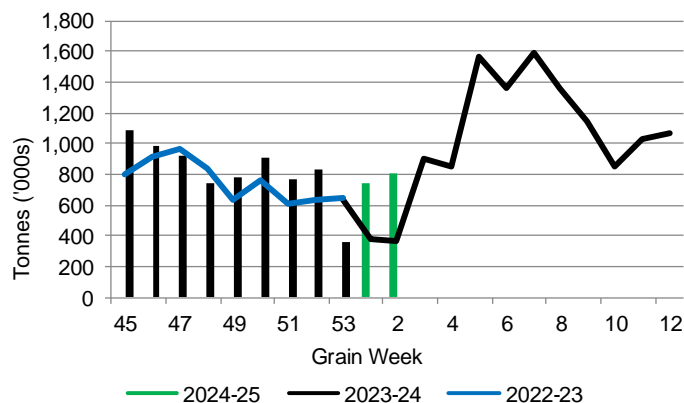


2. Country Deliveries

2-A Country Deliveries ('000 tonnes) – Week 02

	MB	SK	AB	BC	Total
2024-25	136.4	369.9	294.3	6.6	807.2
2023-24	94.6	163.4	103.6	5.7	367.3
4 Wk Avg	129.1	343.3	207.4	4.4	684.2
Var % to Last Year	44%	126%	184%	16%	120%
Var % To 4 Wk Avg	6%	8%	42%	50%	18%

2-B 2024-25 Weekly Country Deliveries



3. Port Performance

3-A Weekly Unloads by Port (Cars) – This Year for Week 02, 4-Week Moving Average and Variances

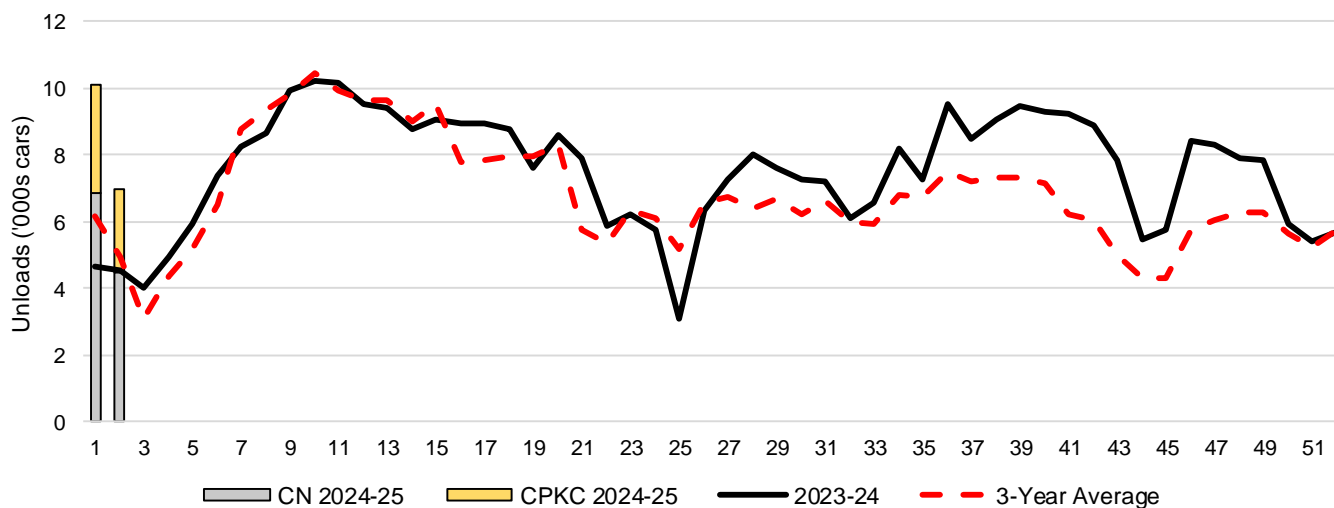
	Vancouver	Prince Rupert	West Coast	Thunder Bay	Churchill	Total
2024-25	5,637	300	5,937	1,128	-	7,065
2023-24	3,446	n/a	3,446	1,076	n/a	4,522
4-Wk Avg.	4,379	537	4,916	1,311	-	6,227
Var % to Last Year	64%	n/a	72%	5%	n/a	56%
Var % to 4-Wk Avg.	29%	-44%	21%	-14%	n/a	13%

3-B Terminal Unloads by Port – This Year-to-Date as at Week 02 and Variances

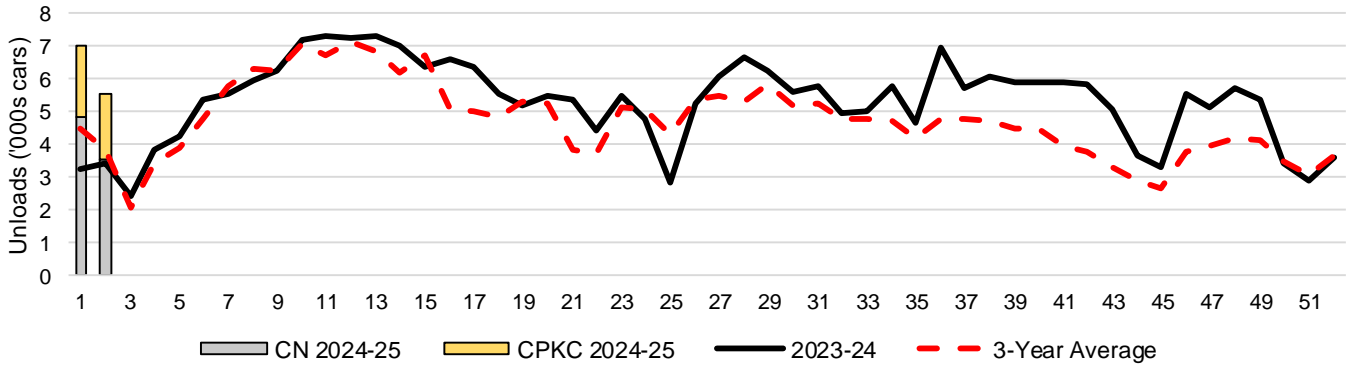
YTD Unloads (cars)	Vancouver	Prince Rupert	West Coast	Thunder Bay	Churchill	Total
2024-25	12,664	1,401	14,065	3,092	-	17,157
2023-24	6,722	42	6,764	2,434	-	9,198
3-Yr Avg	8,350	481	8,831	2,321	-	11,152
Var % to Last Year	88%	3236%	108%	27%	n/a	87%
Var % to 3-Yr Avg	52%	191%	59%	33%	n/a	54%

YTD Unloads ('000 tonnes)	Vancouver	Prince Rupert	West Coast	Thunder Bay	Churchill	Total
2024-25	1,179.9	129.7	1,309.6	298.5	-	1,608.1
2023-24	630.4	3.9	634.3	233.6	-	867.9
3-Yr Avg.	787.5	44.5	832.0	224.8	-	1,056.8
Var % to Last Year	87%	3226%	106%	28%	n/a	85%
Var % to 3-Yr Avg.	50%	191%	57%	33%	n/a	52%

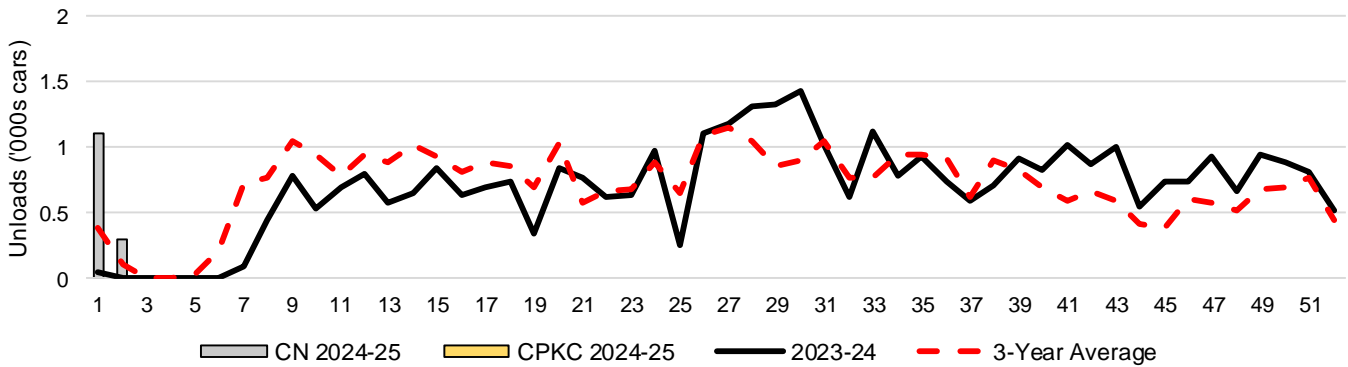
3-C Western Port Terminal Unloads (cars), Total by Carrier, This Year vs. Last Year and the 3-Year Average



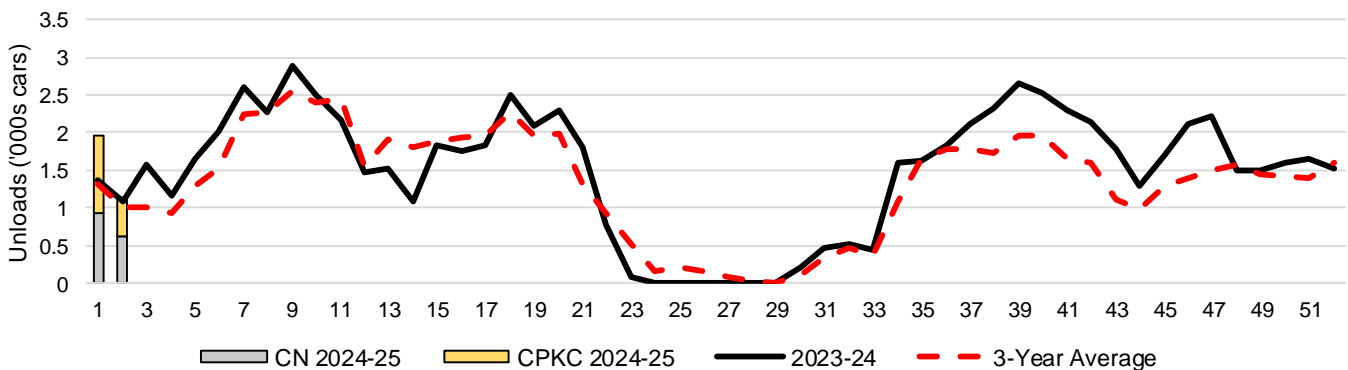
3-D Vancouver Terminal Unloads (cars), Total by Carrier, This Year vs. Last Year and the 3-Year Average



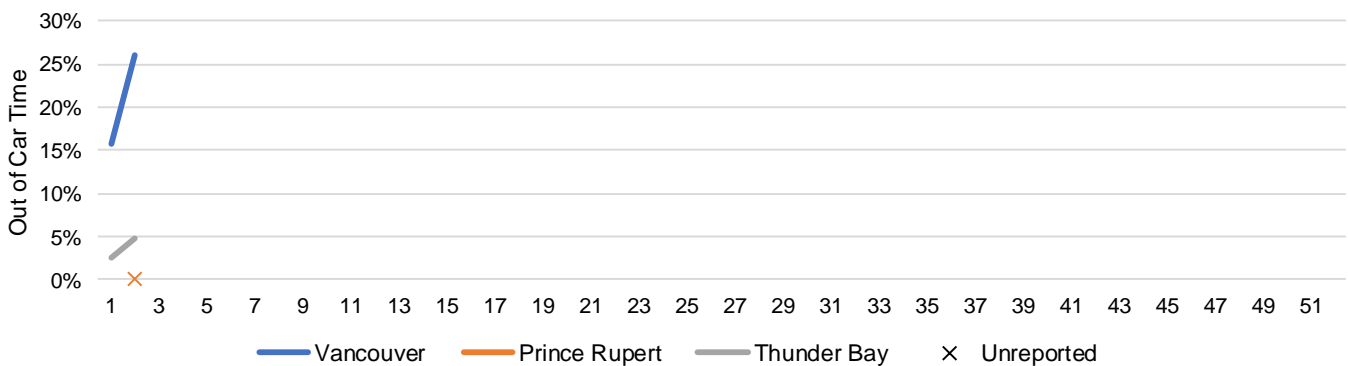
3-E Prince Rupert Terminal Unloads (cars), Total by Carrier, This Year vs. Last Year and the 3-Year Average



3-F Thunder Bay Terminal Unloads (cars), Total by Carrier, This Year vs. Last Year and the 3-Year Average



3-G Weekly Out-of-Car Time (% of hours out-of-cars / total hours working)



Out-of-car time is measured weekly and uses data from terminal elevators on the total number of hours the facilities are open & staffed (including overtime hours) and the corresponding number of hours that terminals have no railcars available to unload. The measure is expressed as a percentage (hours without cars to the total number of hours working).

3-H Monthly Unloads (cars) – This year vs. Last Year and the 3-Year Average to Week 53 2023-24

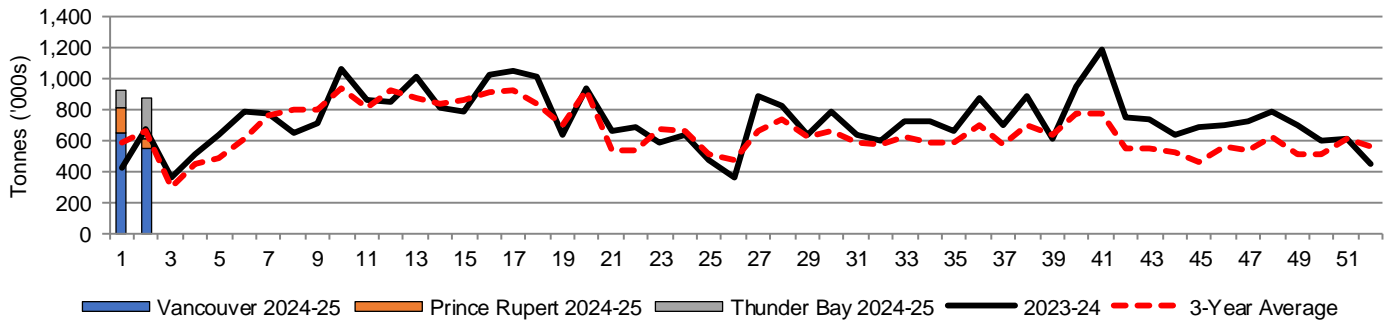
Months	Aug	Sep	Oct	Nov	Dec	Jan	Feb	Mar	Apr	May	Jun	Jul
Weeks	1-5	6-9	10-13	14-18	19-22	23-27	28-31	32-35	36-39	40-44	45-48	49-53
2023-24	24,066	34,250	39,310	44,460	30,025	28,628	30,071	28,076	36,528	40,674	30,338	26,856
2022-23	17,592	37,081	45,507	54,625	31,875	42,443	31,747	34,970	34,538	28,378	23,280	28,334
3-Yr Avg.	21,619	34,406	39,606	42,112	27,333	30,880	25,934	25,484	29,302	28,644	22,416	23,542
Var % to Last Year	37%	-8%	-14%	-19%	-6%	-33%	-5%	-20%	6%	43%	30%	-5%
Var % to 3-Yr Avg.	11%	0%	-1%	6%	10%	-7%	16%	10%	25%	42%	35%	14%

4. Shipments

4-A Shipments from Port Terminals ('000 tonnes) – This Year-to-Date as at Week 02 and Variance to Last Year-to-Date

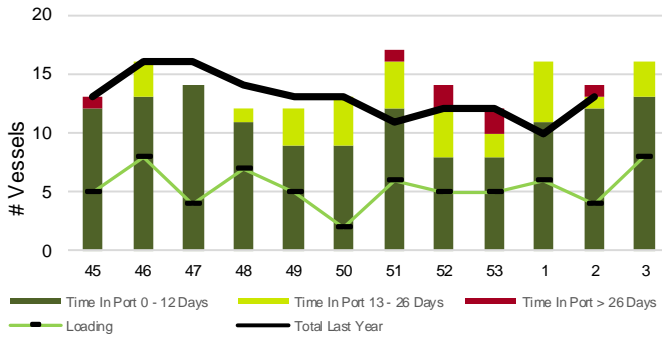
	Vancouver	Prince Rupert	West Coast	Thunder Bay	Churchill	Total
2024-25	1,191.5	222.7	1,414.2	374.6	-	1,788.8
2023-24	709.3	77.0	786.3	312.6	-	1,098.9
3-Yr Avg.	830.3	117.0	947.3	296.5	-	1,243.8
Var % to Last Year	68%	189%	80%	20%	n/a	63%
Var % to 3-Yr Avg.	44%	90%	49%	26%	n/a	44%

4-B Weekly Shipments ('000 tonnes) from Port Terminals – This Year vs Last Year and the 3-Year Average

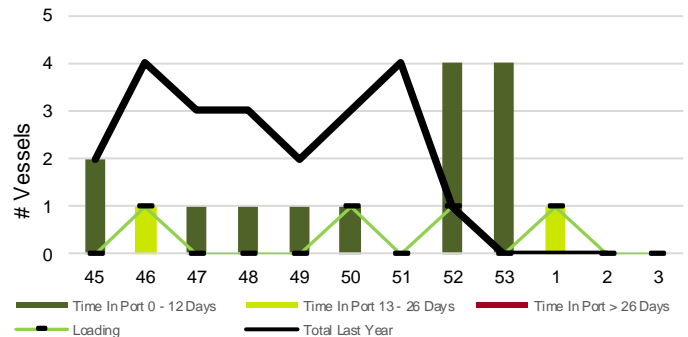


5. Vessels

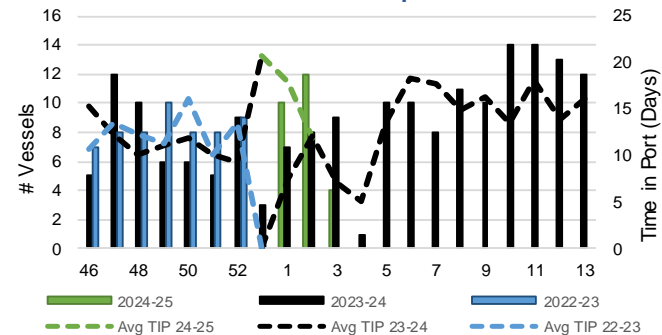
5-A Vessel Lineup at Vancouver as of Week 03 2024-25



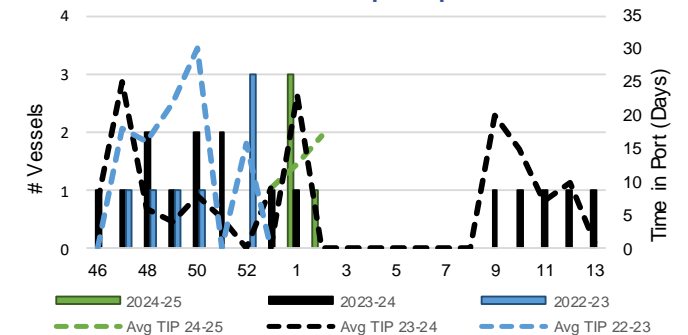
5-C Vessel Lineup at Prince Rupert as of Week 03 2024-25



5-B Vessels Cleared at Vancouver up to Week 03 2024-25



5-D Vessels Cleared at Prince Rupert up to Week 03 2024-25



Note: The 'Time in Port' measure for 6-A and 6-C is calculated as how long each vessel in the lineup has been in port as at Sunday 23:59 of that grain week. The 'Avg Time in Port (TIP)' measure for 6-B and 6-D is the average number of days that all vessels which cleared that week were in port. These measures use vessel data provided by the BC Chamber of Shipping and Pacific Pilotage Authority.